

distinguished plans

Brilliant features just for you . . . more Kroetz-Keagy firsts! Now, for the first time a choice of 4 different floor plans, elevator service, private enclosed breakfast balconies and two entrances to virtually every apartment. All apartments have sliding glass doors opening onto screen enclosed balconies. Choose any one of these outstanding and carefully designed floor plans; if you purchase prior to construction and so desire, you may incorporate your own ideas thus individualizing your apartment. In any case you have a choice of tile and fixture colors in your baths and cabinet and appliance colors in your trim color-keyed, light conditioned G. E. kitchen. The kitchen floor tile too, may be had in the color and pattern you like.

PREMIER 3-BEDROOM APARTMENTS

Apartment numbers 1, 2, 27, 28, 31, 32. Truly the pride of the Bahama Club. Over 70 feet of balcony surrounding of which is screened. All these apartments up or down.

DELUXE APARTMENTS

Apartment numbers 4, 25, 26, 29, 30. Have a large living area, two fully enclosed balconies in the master bedroom. All the Gulf side as well as an enclosed

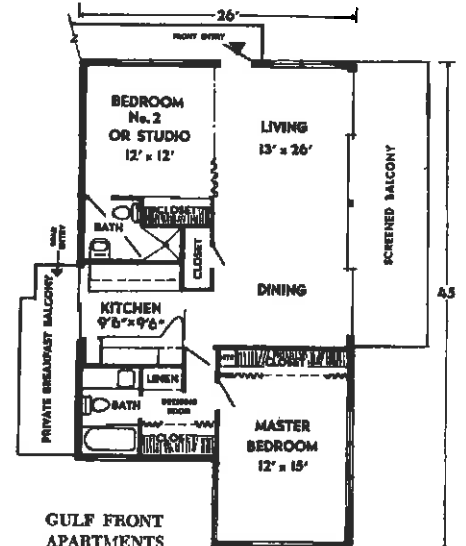
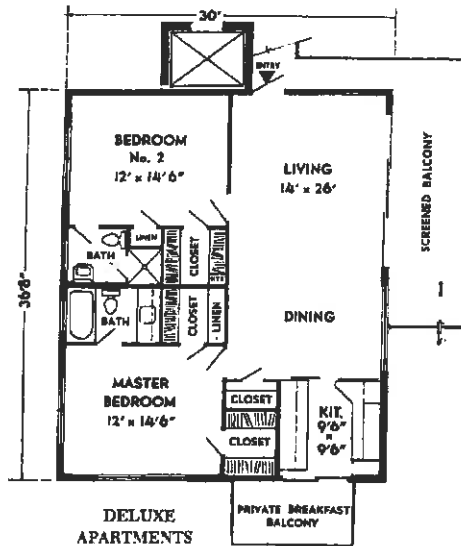
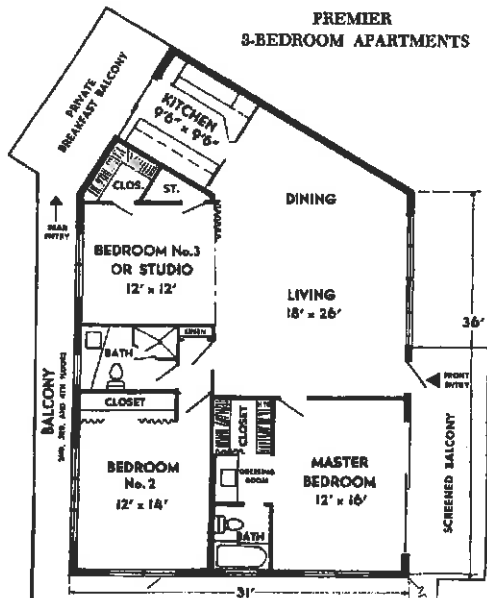
GULF FRONT APARTMENTS

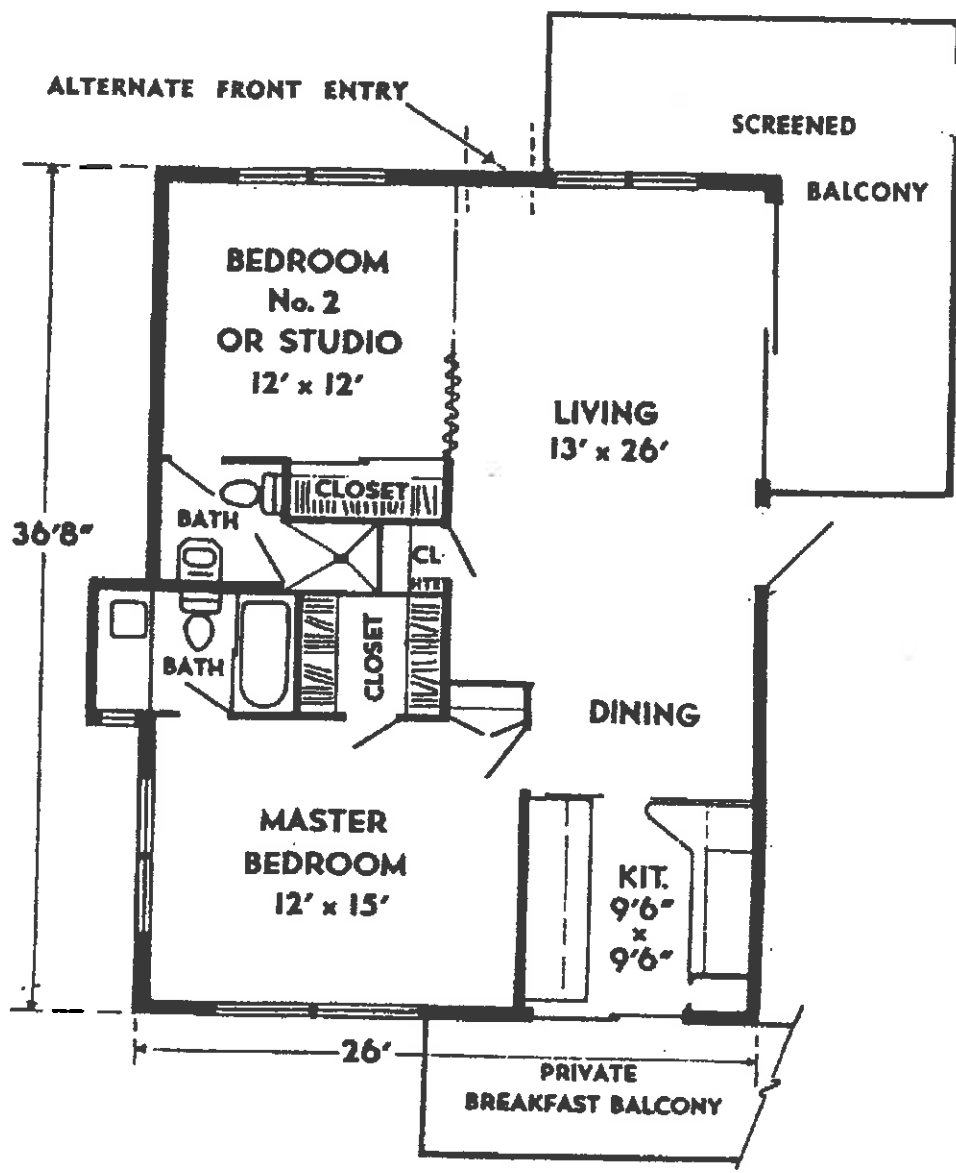
Apartment numbers 13, 14, 23, 24. No tending almost to the water's edge. The breath taking view. Especially note room and the tremendous amount of

PATIO APARTMENTS

Apartment numbers 5 through 12, an in price, and designed primarily for a tending almost to the water's edge. The breath taking view. Especially note room and the tremendous amount of

NOTE: Plans are shown of the North





PATIO APARTMENTS