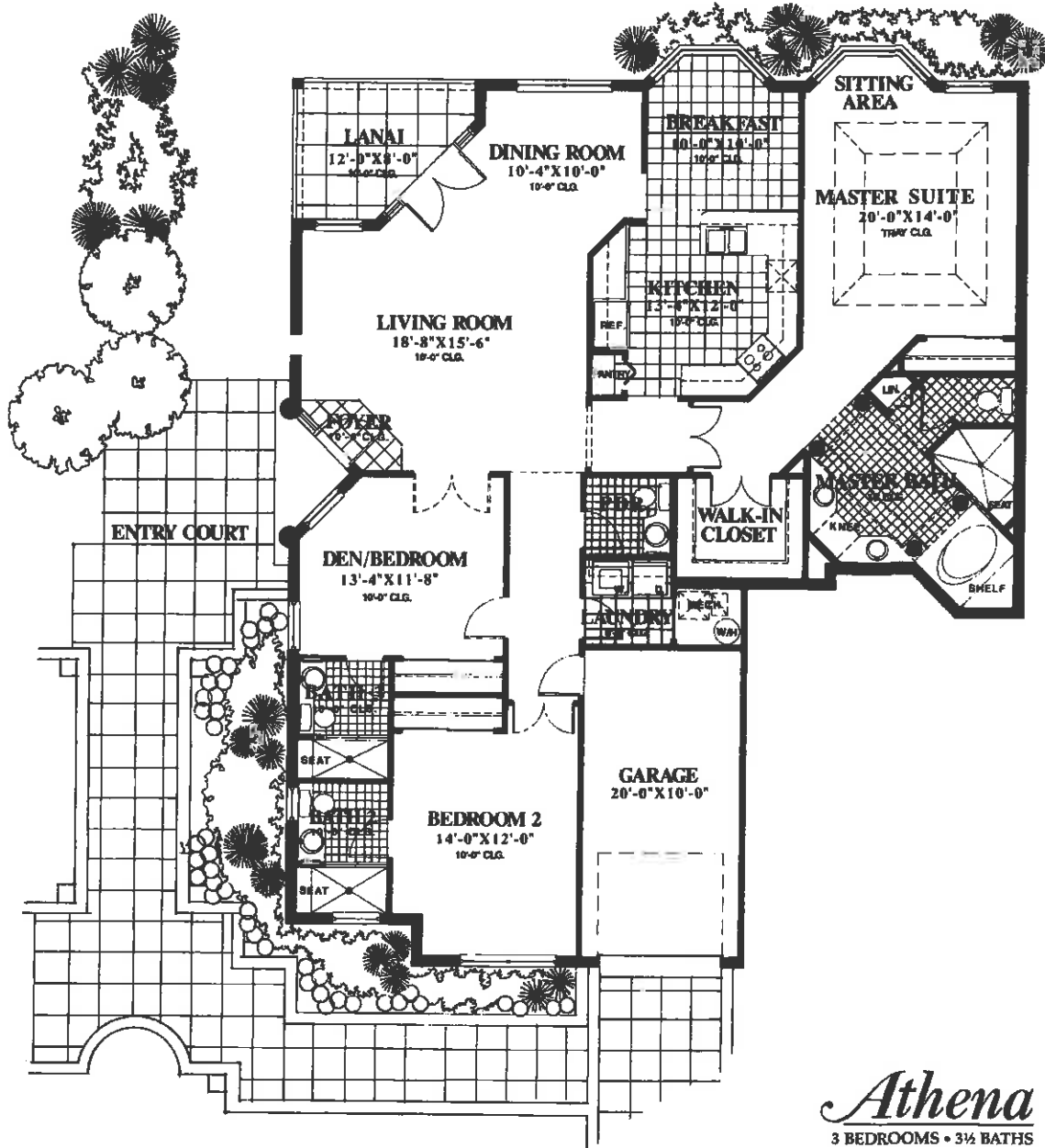


PRIVATE COURT



Athena
3 BEDROOMS • 3 1/2 BATHS

The Athena is an architectural masterpiece designed with your every need and comfort in mind. This expansive 3 bedroom, 3 1/2 bath Villa flows gracefully from Living Room to formal Dining Room, through splendid French doors to the inviting Lanai. The spacious Kitchen is a gourmet's delight with every imaginable convenience. Picturesque bay windows highlight the informal Dining Room as well as a cozy separate sitting area in the Master Suite. The Master Suite also features an impressive tray ceiling and two separate closets . . . including a spacious walk-in closet. Extensive use of dramatic ten foot ceilings and eight foot doors throughout the Villa further enhance the feeling of understated elegance. Your own attached garage and direct entrance ensure your comfort and privacy.

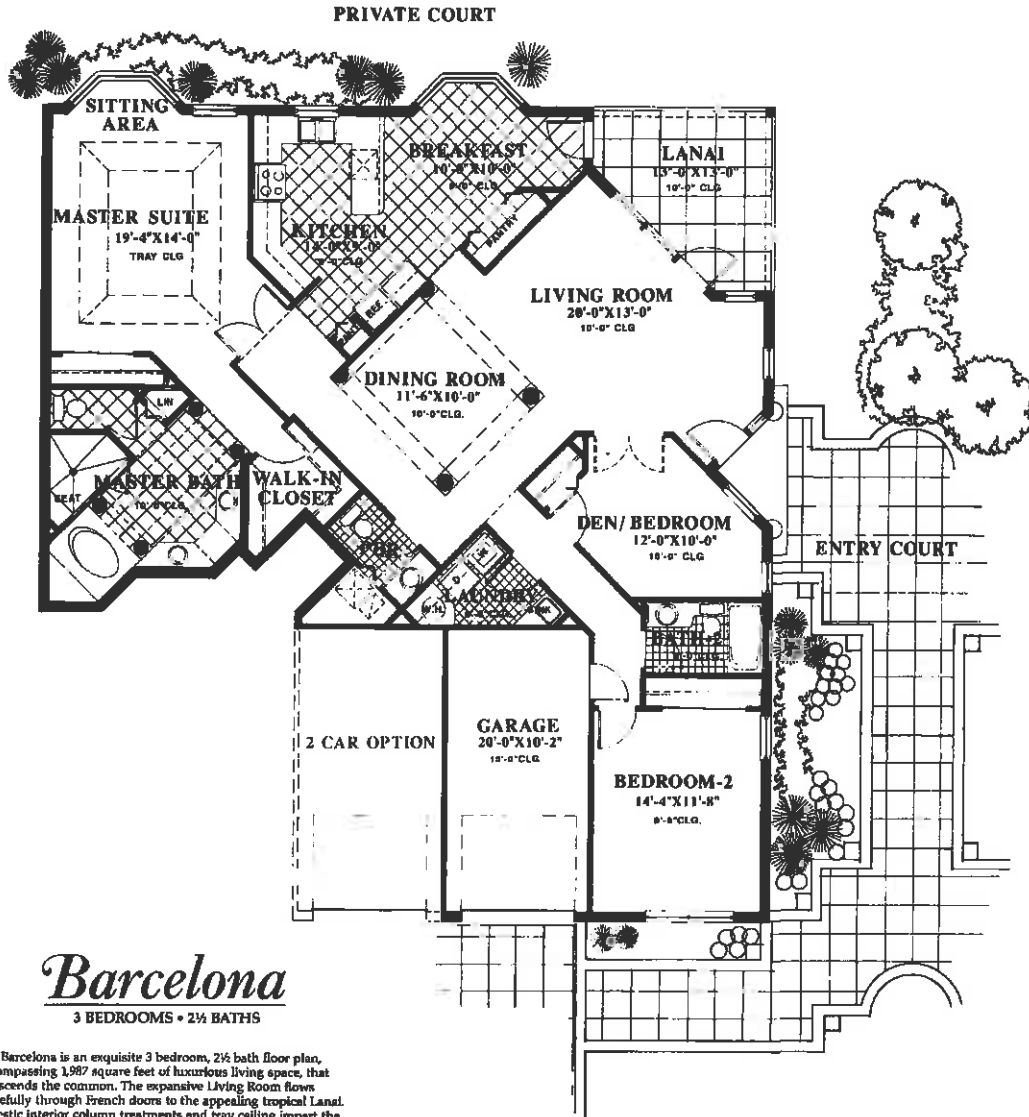
The Athena epitomizes elegant living and sets a new standard in architectural design.

Living area	2,005 sq. ft.
Garage	200 sq. ft.
Lanai	89 sq. ft.
Entry	28 sq. ft.
TOTAL	2,322 sq. ft.

All dimensions are approximate. The developer reserves the right to change and alter all materials, specifications, features, dimensions and details without notice.

The Colonnade
AT PARK SHORE

ORAL REPRESENTATION CANNOT BE RELIED UPON AS CORRECTLY STATING REPRESENTATION OF THE DEVELOPER. FOR CORRECT REPRESENTATIONS, MAKE REFERENCE TO THE BROCHURE AND THE DOCUMENTS REQUIRED BY SECTION 716.500, FLORIDA STATUTES, TO BE FURNISHED BY THE DEVELOPER TO A BUYER OR LESSEE.



Barcelona

3 BEDROOMS • 2½ BATHS

The Barcelona is an exquisite 3 bedroom, 2½ bath floor plan, encompassing 1,987 square feet of luxurious living space, that transcends the common. The expansive Living Room flows gracefully through French doors to the appealing tropical Lanai. Majestic interior column treatments and tray ceiling impart the formal Dining Room with elegant Mediterranean ambiance. Your every culinary desire will be satisfied in the spacious Kitchen which has a convenient pass-through into the informal Dining Room. Spectacular bay windows highlight the sunny informal Dining Room and a cozy sitting area in the Master Suite. The Master Suite also features a breathtaking tray ceiling and two separate closets . . . including a magnificent walk-in closet. Extensive use of dramatic ten foot ceilings and eight foot doors throughout the Villa, further enhance the feeling of elegance while your private attached garage and direct entrance ensure your comfort and privacy.

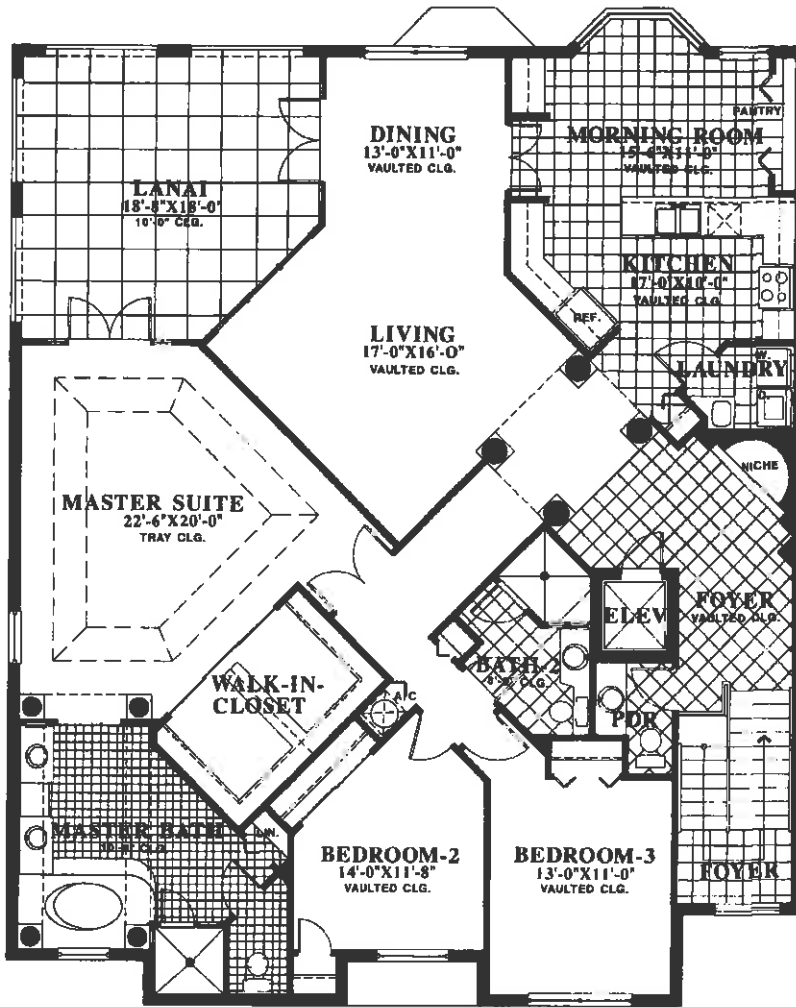
The Barcelona exemplifies the discriminating lifestyle that you deserve.

Living area	1,987 sq. ft.
Garage (1 car)	200 sq. ft.
Garage (2 car)	405 sq. ft.
Entry	28 sq. ft.
Lanai	130 sq. ft.
TOTAL (1 car)	2,345 sq. ft.
TOTAL (2 car)	2,590 sq. ft.

All dimensions are approximations. The developer reserves the right to change and alter all materials, specs, finishes, dimensions and designs without notice.

ORAL REPRESENTATION CANNOT BE RELIED UPON AS CORRECTLY STATING REPRESENTATION OF THE DEVELOPER. FOR CORRECT REPRESENTATIONS, MAKE REFERENCE TO THE BROCHURE AND THE DOCUMENTS REQUIRED BY SECTION 718.502, FLORIDA STATUTES, TO BE FURNISHED BY THE DEVELOPER TO A BUYER OR LESSEE.

The Colonnade
AT PARK SHORE



Capri

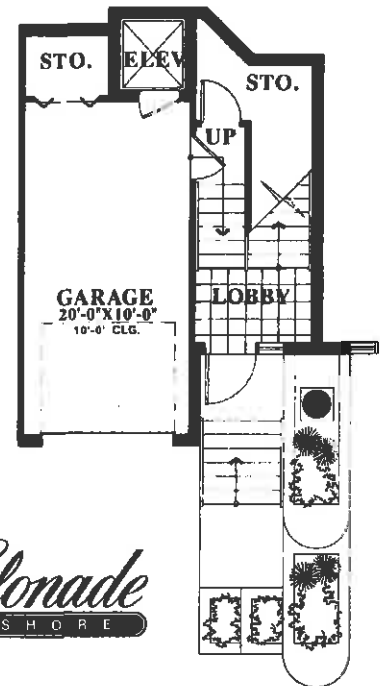
3 BEDROOMS • 2½ BATHS

The Capri is a unique, spectacular architectural achievement. Truly in a class by itself, this 3 bedroom, 2½ bath upper level Villa incorporates 2,439 square feet of elegant living space. The grand Foyer features a graceful niche to showcase your favorite piece of art. Majestic interior columns herald the entrance to the expansive Living Room. The spacious Kitchen is a gourmet's delight and features a convenient pass-through into the informal Dining Room. A commanding bay window provides a panoramic view from the informal Dining Room. French doors and sliding glass doors provide access from the formal Dining Room, Living Room and Master Suite to the splendid tropical Lanai. The luxurious Master Suite features an impressive tray ceiling and two immense walk-in closets. Dramatic ten foot ceilings and eight foot doors are used extensively throughout the Villa. In many areas, palatial vaulted ceilings further enhance the feeling of quiet elegance. Your own attached garage and private elevator ensure your comfort and privacy.

The Capri blends the classic look of luxury and refinement, while providing for your every need and comfort.

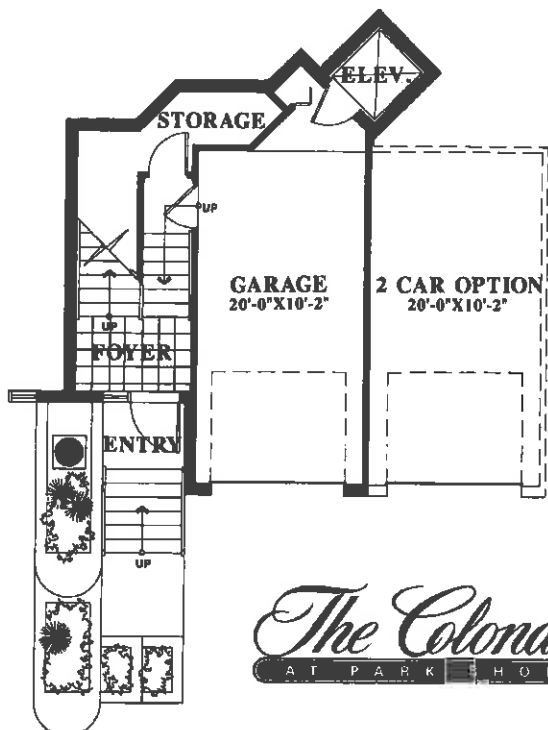
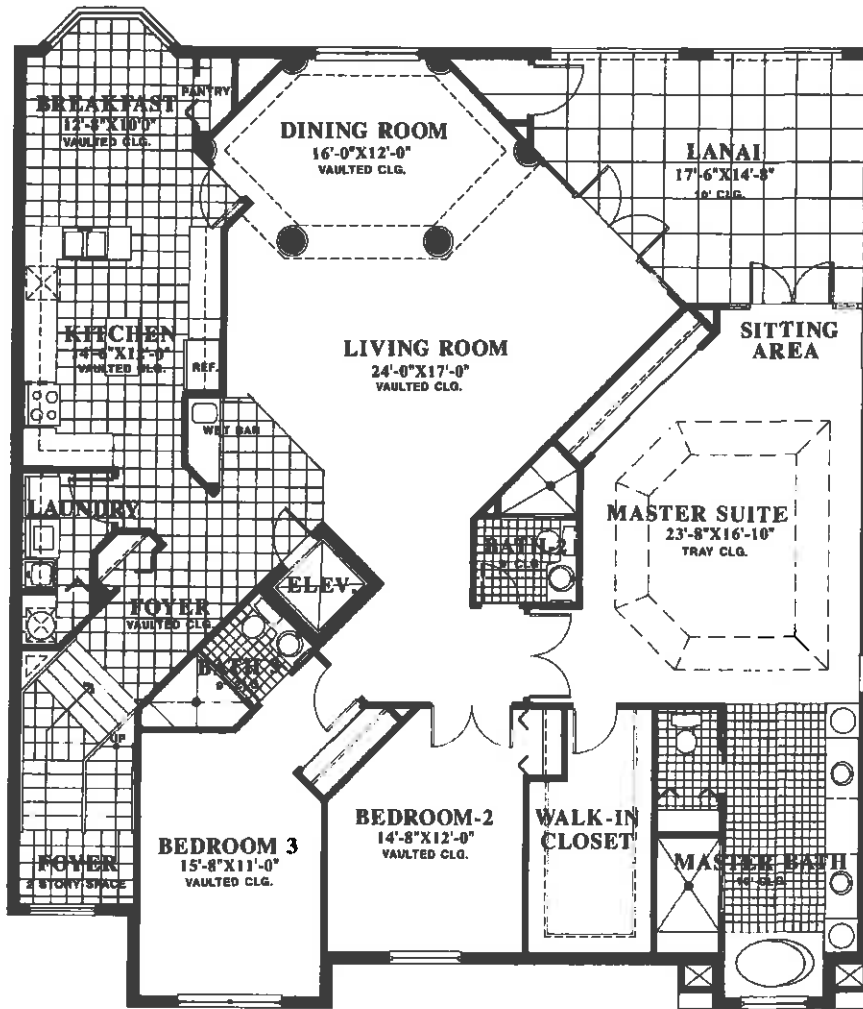
Living area	2,439 sq. ft.
Garage	200 sq. ft.
Lanai	305 sq. ft.
Entry	35 sq. ft.
Storage Area	106 sq. ft.
TOTAL	3,085 sq. ft.

All dimensions are approximate. The developer reserves the right to change and alter all materials, specifications, features, dimensions and designs without notice.



The Colonnade
AT PARK SHORE

ORAL REPRESENTATION CANNOT BE RELIED UPON AS CORRECTLY STATING REPRESENTATION OF THE DEVELOPER. FOR CORRECT REPRESENTATIONS, MAKE REFERENCE TO THE BROCHURE AND THE DOCUMENTS REQUIRED BY SECTION 716.503, FLORIDA STATUTES, TO BE FURNISHED BY THE DEVELOPER TO A BUYER OR LESSEE.



Delphi

3 BEDROOMS • 3 BATHS

The Delphi is the ultimate architectural work of art. This 3 bedroom, 3 bath upper level Villa incorporates 2,477 square feet of spectacular living space, designed to fulfill your every need and comfort. The grand Foyer flows gracefully into the expansive Living Room complete with convenient wet bar area. Majestic interior columns distinguish the elegant formal Dining Room. Classic French doors furnish access to the spacious and sunny Lanai from the Living Room, Formal Dining Room and Master Suite. The delightful Kitchen provides for all of your culinary needs. A beautiful bay window offers a panoramic view from the informal Dining Room. The luxurious Master Suite is highlighted by an impressive tray ceiling and features two closets . . . including an expansive walk-in closet. Dramatic ten foot ceilings and eight foot doors are used extensively throughout the Villa. In many areas, pslatial vaulted ceilings further enhance the feeling of elegance. Your own attached garage and private elevator ensure your comfort and privacy.

The Delphi represents an incomparable architectural accomplishment that provides a lifestyle of effortless luxury.

Living area	2,477 sq. ft.
Garage (1 car)	215 sq. ft.
Garage (2 car)	420 sq. ft.
Entry	35 sq. ft.
Lanai	291 sq. ft.
Storage Area	117 sq. ft.
TOTAL (1 car)	3,125 sq. ft.
TOTAL (2 car)	3,330 sq. ft.

The Colonnade

AT PARK SHORE

All dimensions are approximations. The developer reserves the right to change and alter all materials, specifications, features, dimensions and design without notice.

OFFICIAL REPRESENTATION CANNOT BE RELIED UPON AS CORRECTLY STATING REPRESENTATION OF THE DEVELOPER. FOR CORRECT REPRESENTATIONS, MAKE REFERENCE TO THE BROCHURE AND THE DOCUMENTS REQUIRED BY SECTION 718.503, FLORIDA STATUTES, TO BE FURNISHED BY THE DEVELOPER TO A BUYER OR LESSEE.