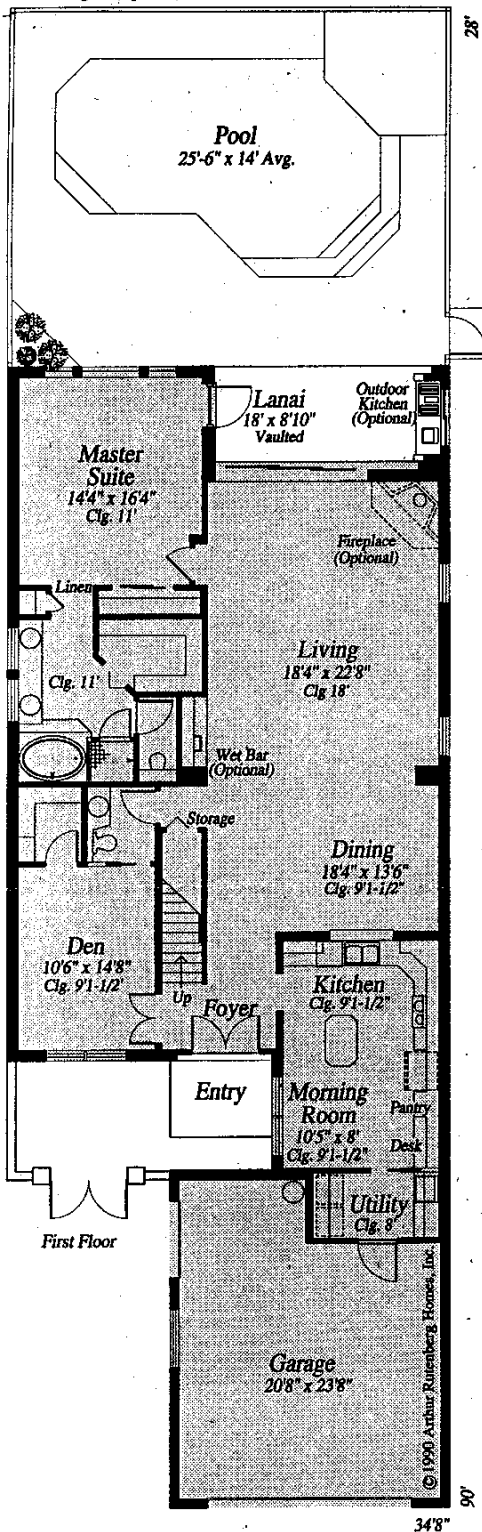


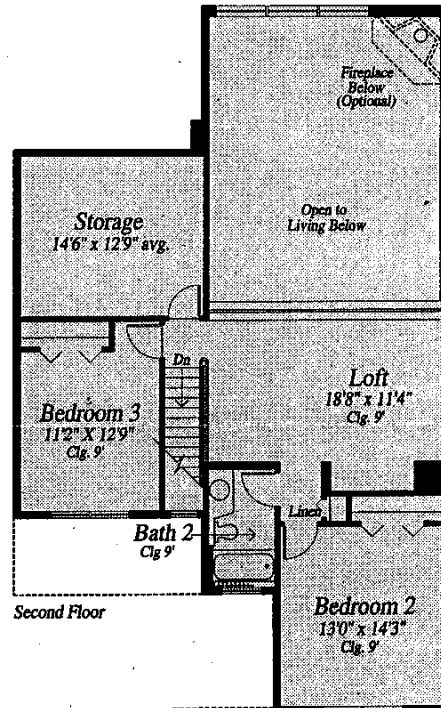
Pool Package A (Optional)

34'8"



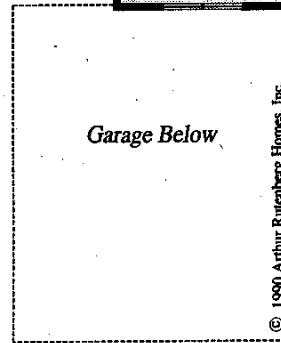
First Floor

34'8"



Second Floor

34'8"



Garage Below

56'2"

Aberdeen

Plan # 218-07
Revised 5/16/97

Plans are subject to change without notice. Certain items such as the pool, outdoor kitchen, etc. may be optional.

Illustrations are artist renderings only. This is a concept drawing. For a more accurate floor plan, reference should be made to the Design Manual.

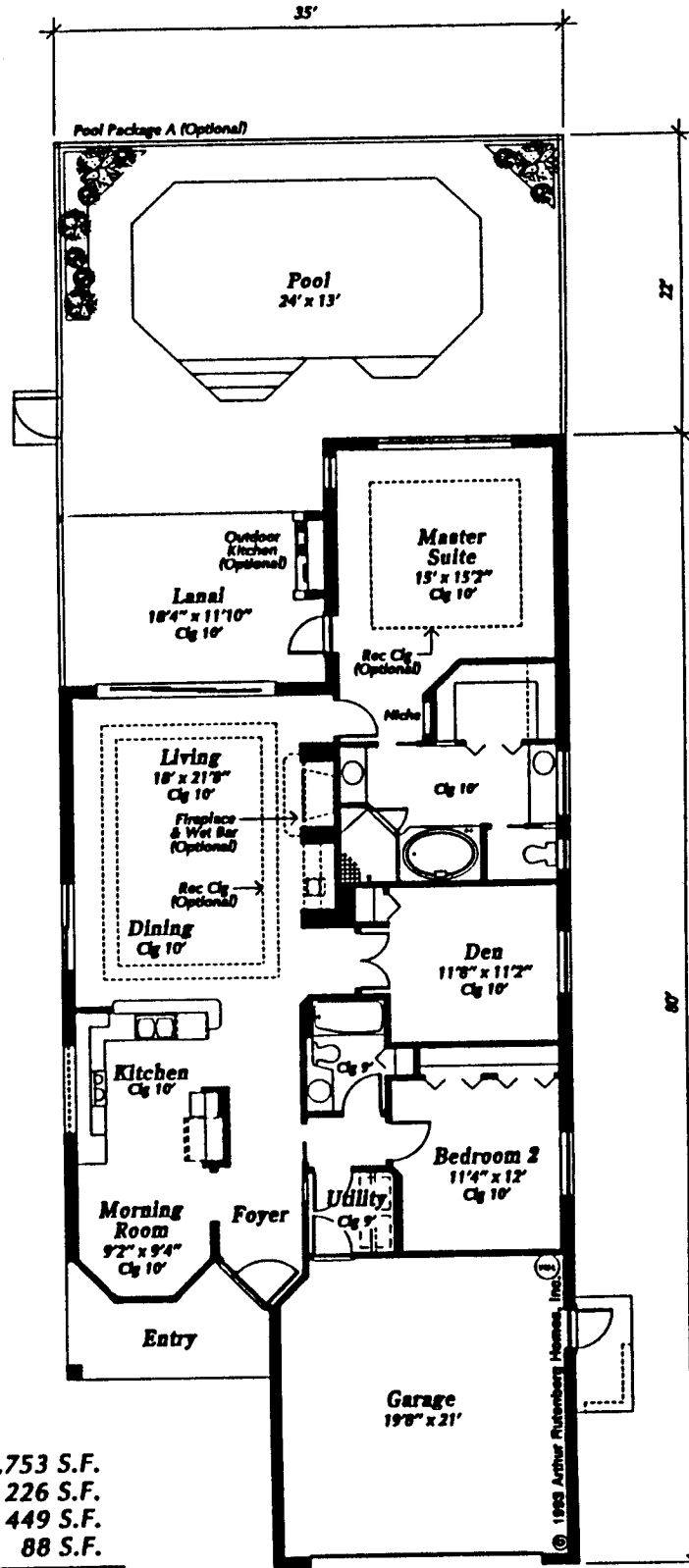
Living (1st floor)	1,942 s.f.
Living (2nd floor)	1,001 s.f.
Lanai	178 s.f.
Garage	513 s.f.
Entry	48 s.f.
Total	3,682 s.f.

© 1990 Arthur Rutenberg Homes, Inc.

© 1990 Arthur Rutenberg Homes, Inc.

Aspen II 250-05

Floor Plan

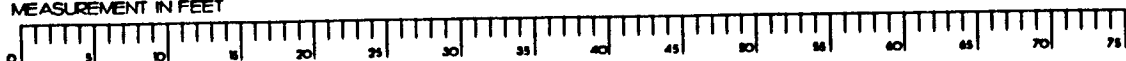


Aspen II

1,753 square feet
Plan # 250-05

Living	1,753 S.F.
Lanai	226 S.F.
Garage	449 S.F.
Entry	88 S.F.
Total	2,516 S.F.

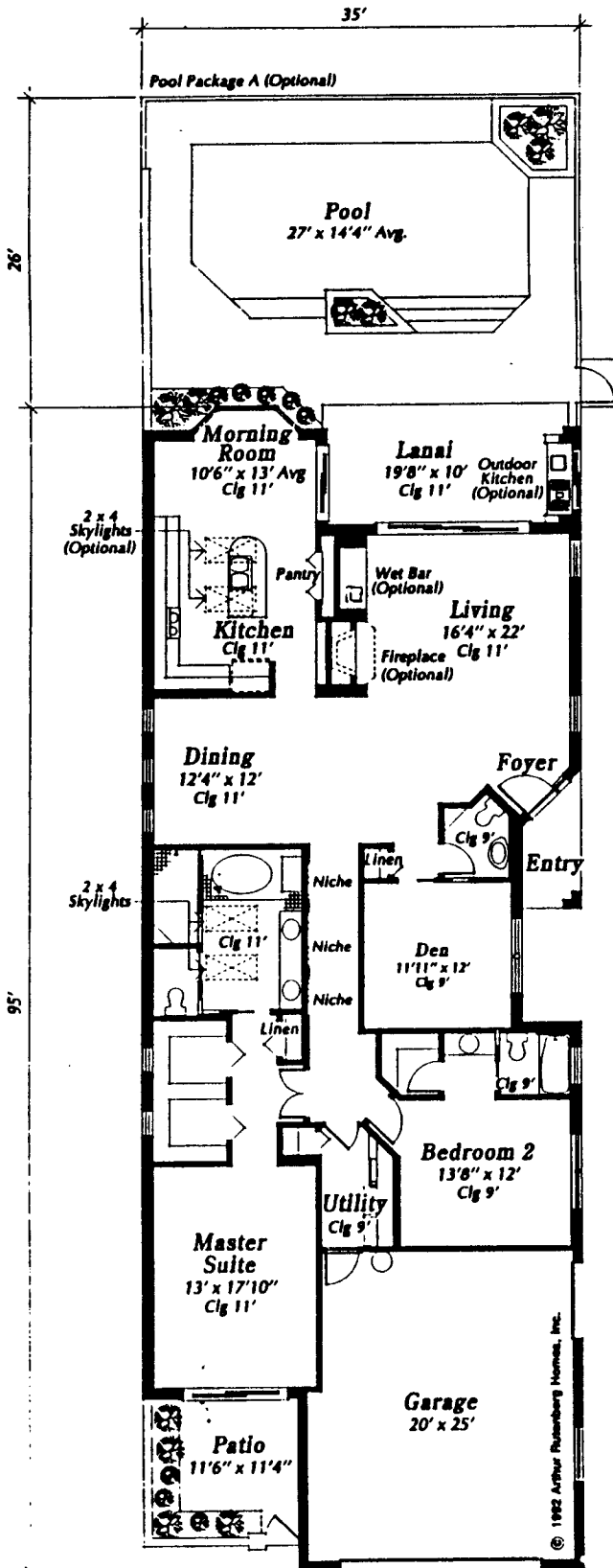
Plans and specifications subject to change without notice. Certain items such as the pool, fireplace or roof tile shown may be optional. Reference should be made to the applicable specifications.
MEASUREMENT IN FEET



September 12, 1997

Augusta II 256-08

Floor Plan

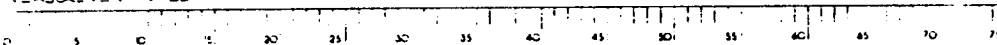


Augusta II

2,286 square feet
Plan # 256-08

Living	2,286 S.F.
Lanai	196 S.F.
Garage	563 S.F.
Entry	33 S.F.
Total	3,078 S.F.

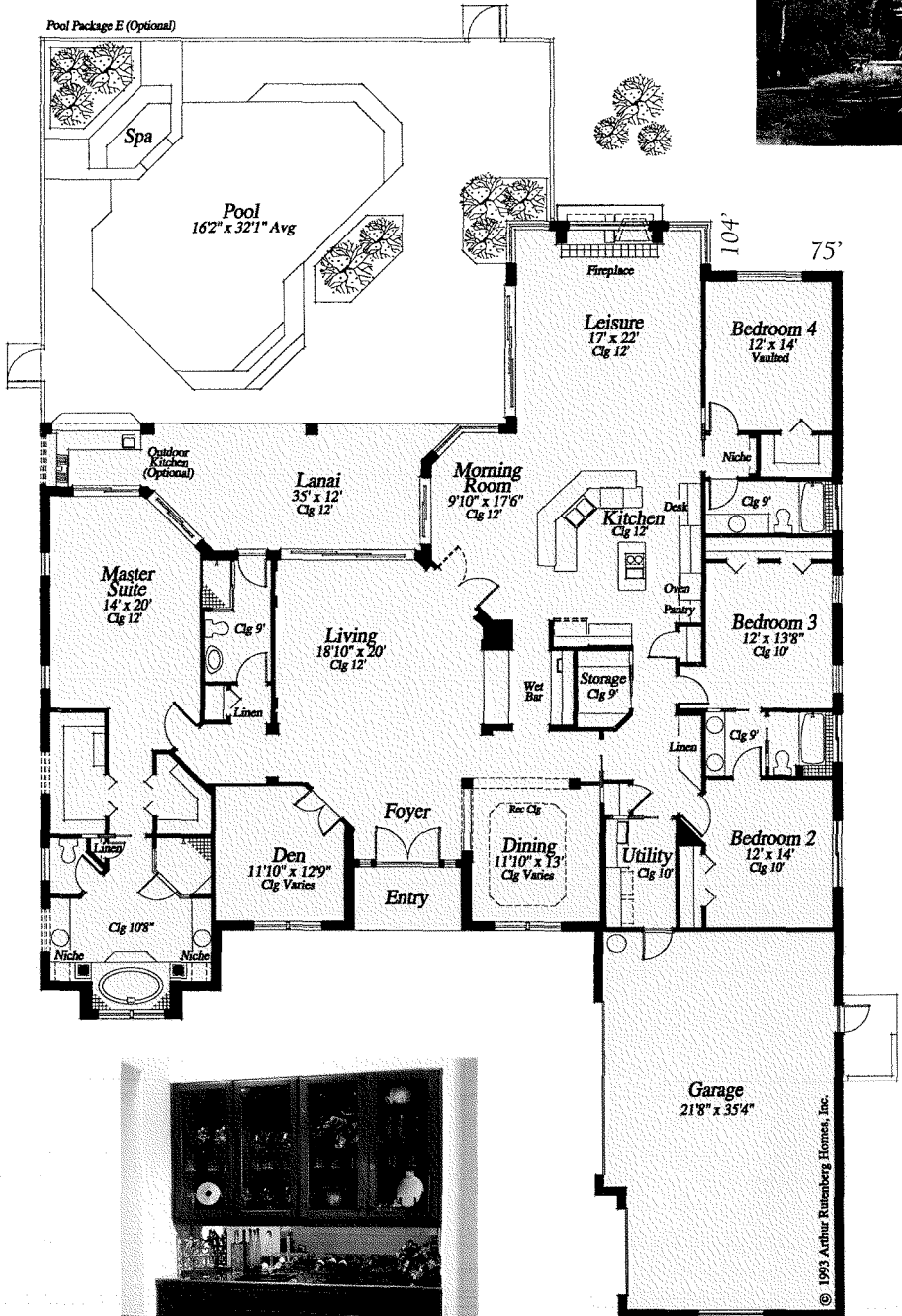
Plans and specifications subject to change without notice. Certain items such as the pool, fireplace or floor tile shown may be optional. Reference should be made to the applicable specifications.
MEASUREMENT IN FEET

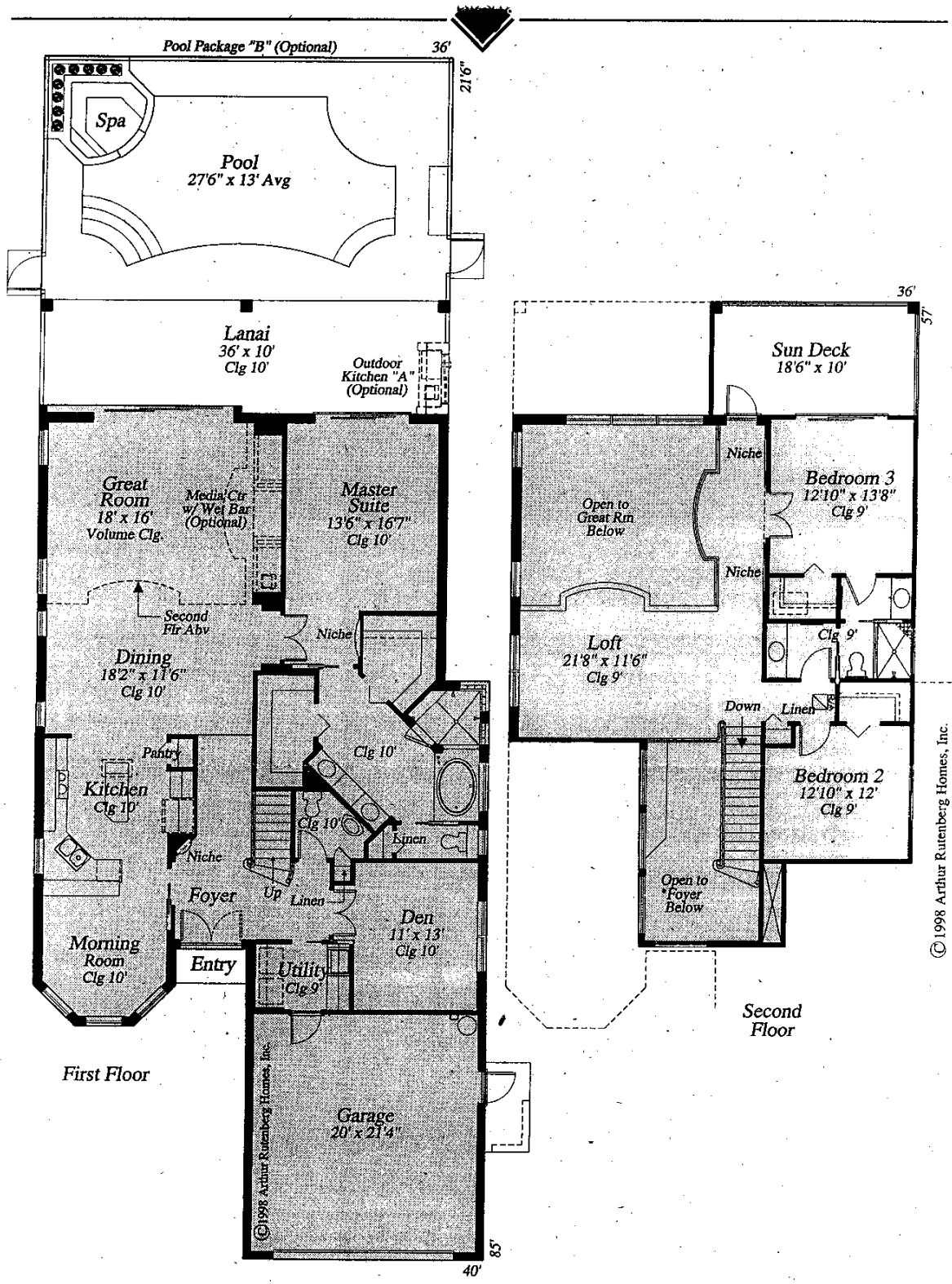


May 16, 1997

Living Large—the Prestigious Catalina II

4 Bedrooms, 4 Baths, Den, 3-car garage
3,790 square feet





© 1998 Arthur Rutenberg Homes, Inc.

Clairmont

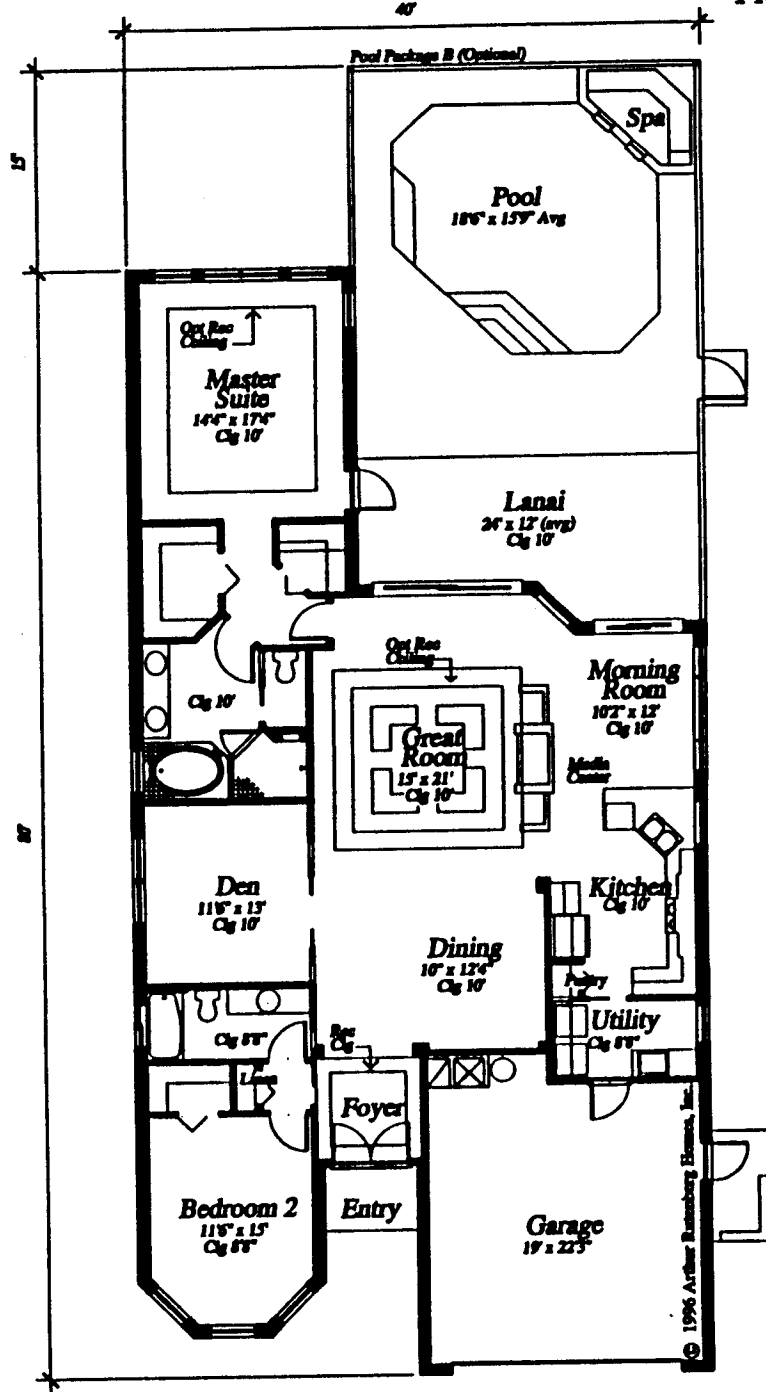
Plan # 480-02
Revised 07/16/99

1st Floor Living	1,992 s.f.
2nd Floor Living	900 s.f.
Lanai	360 s.f.
Deck	185 s.f.
Garage	469 s.f.
Entry	19 s.f.
Total	3,925 s.f.

Plans are subject to change without notice. Certain items such as the pool or fireplace shown may be optional. Arthur Rutenberg Homes reserves the right to make modifications to floor plans, materials and specifications without notice. Dimensions are approximate. Illustrations are artist renderings only. This is a concept drawing. For a more accurate floor plan, reference should be made to the Design Manual.

Montreux III 388-02

Floor Plan

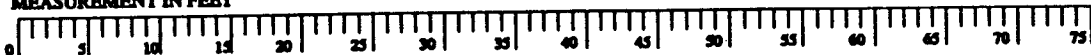


Montreux III

2,037 square feet
Plan # 388-02

Living	2,037 S.F.
Lanai	247 S.F.
Garage	435 S.F.
Entry	30 S.F.
Total	2,749 S.F.

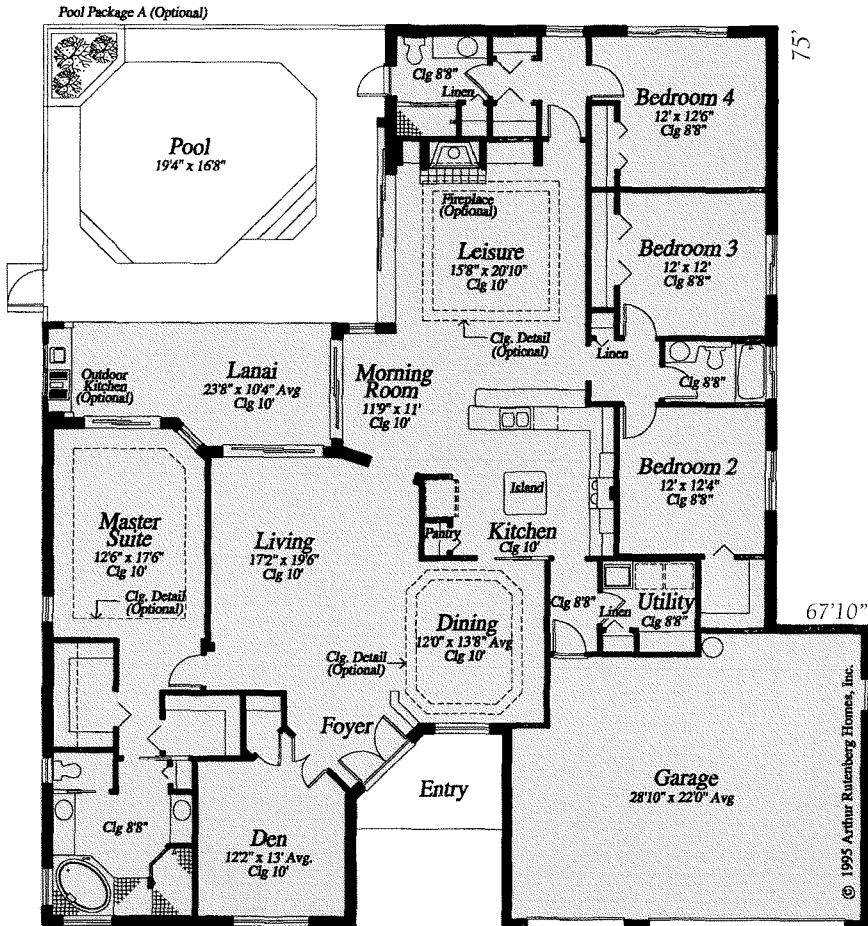
Plans and specifications subject to change without notice. Certain items such as the pool, fireplace or roof tile shown may be optional. Reference should be made to the applicable specifications.
MEASUREMENT IN FEET



December 12, 1997

Gracious & Spacious, Full of Light – Nassau V

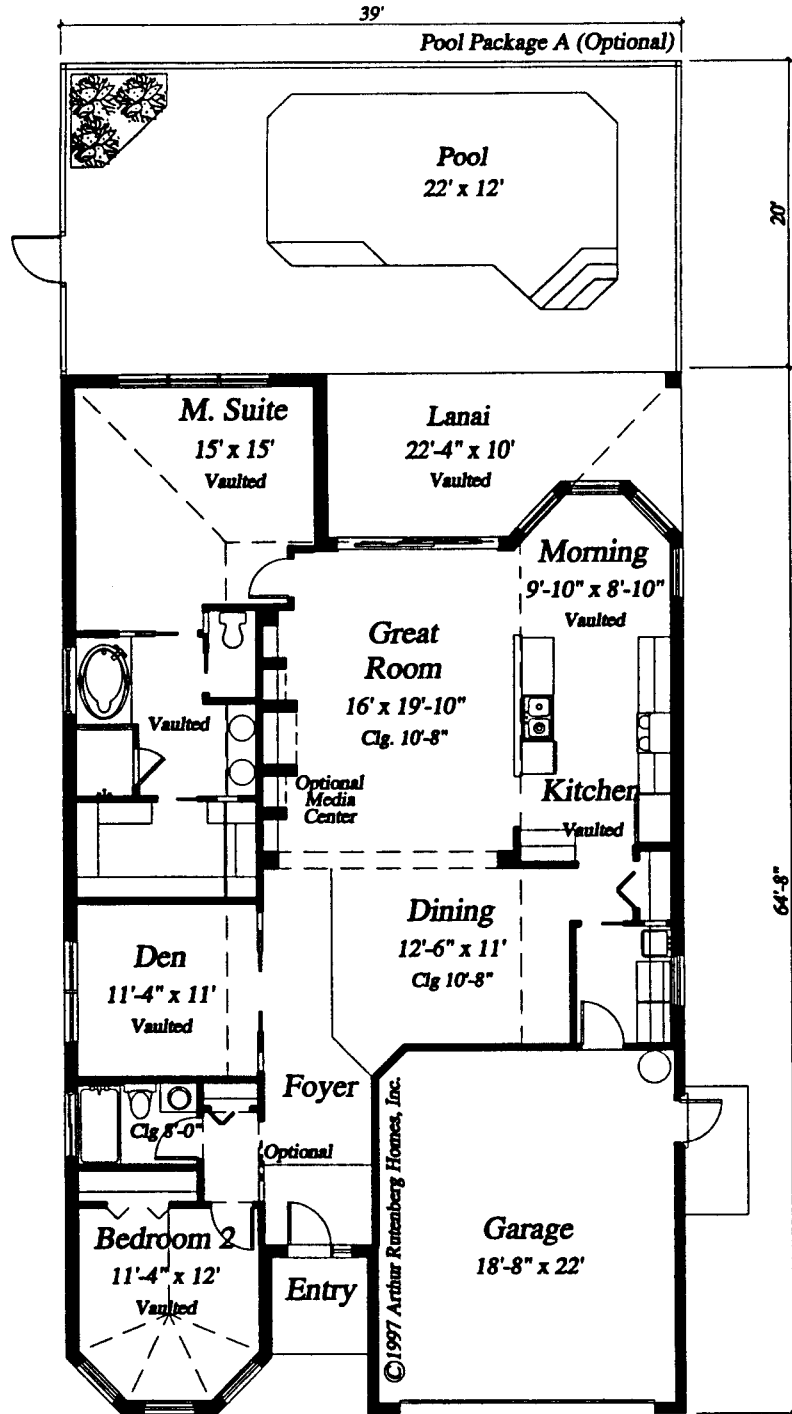
4 Bedrooms, 3 Baths, Den, 3-car garage
2,919 square feet



Underfoot
and get

San Marco 416-04

Floor Plan

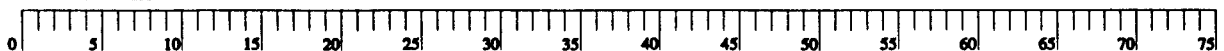


San Marco

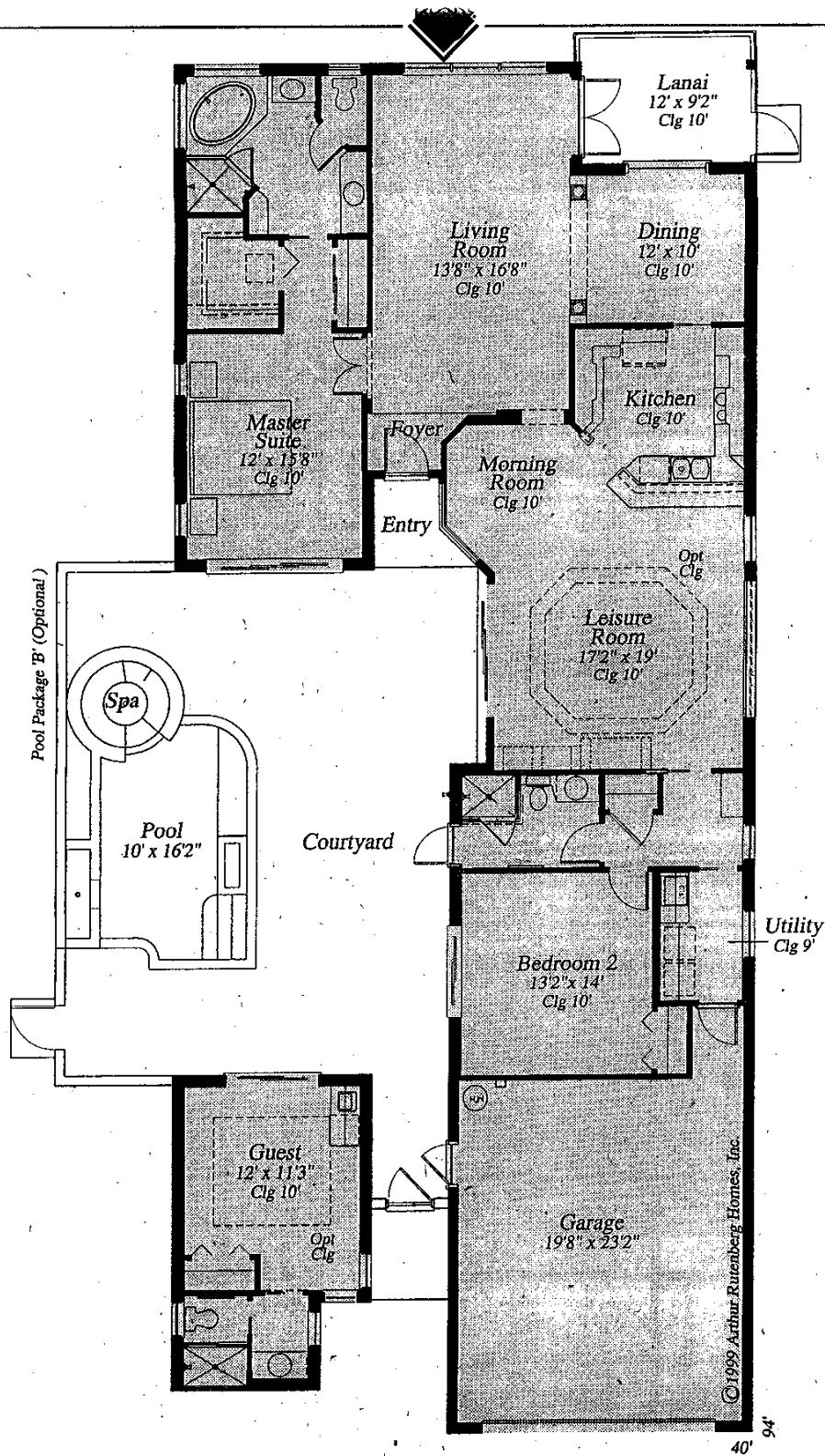
1,813 square feet
Plan # 416-04

Living	1,813 S.F.
Lanai	199 S.F.
Garage	440 S.F.
Entry	36 S.F.
Total	2,488 S.F.

Plans and specifications subject to change without notice. Certain items such as the pool, fireplace or roof tile shown may be optional. Reference should be made to the applicable specifications.
MEASUREMENT IN FEET



February 27, 1998



Sea Pines II

Plan # 488-01
Revised 6/11/99

Plans are subject to change without notice. Certain items such as the pool or fireplace shown may be optional.

Arthur Rutenberg Homes reserves the right to make modifications to floor plans, materials and specifications without notice. Dimensions are approximate.

Illustrations are artist renderings only. This is a concept drawing. For a more accurate floor plan, reference should be made to the Design Manual.

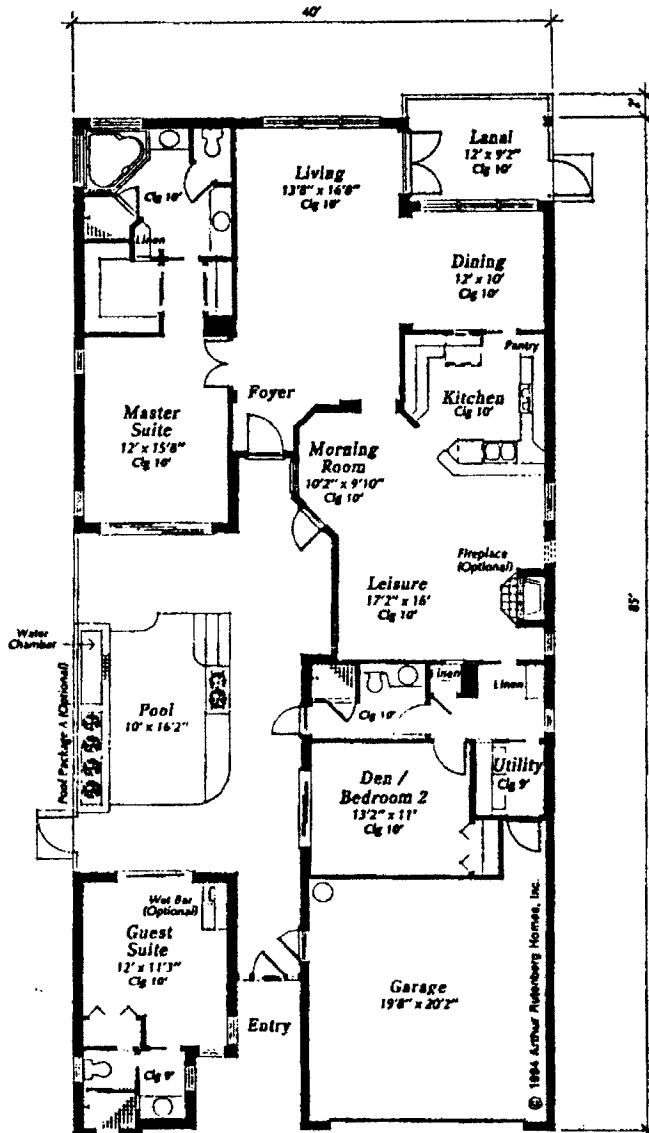
Living (Main)	1,966 S.F.
Living (Guest)	271 S.F.
Living Total	2,237 S.F.
Lanai	111 S.F.
Garage	522 S.F.
Entry	63 S.F.
Total	2,933 S.F.

Sea Pines

© 1994 Arthur Rutenberg Homes, Inc.



"A"

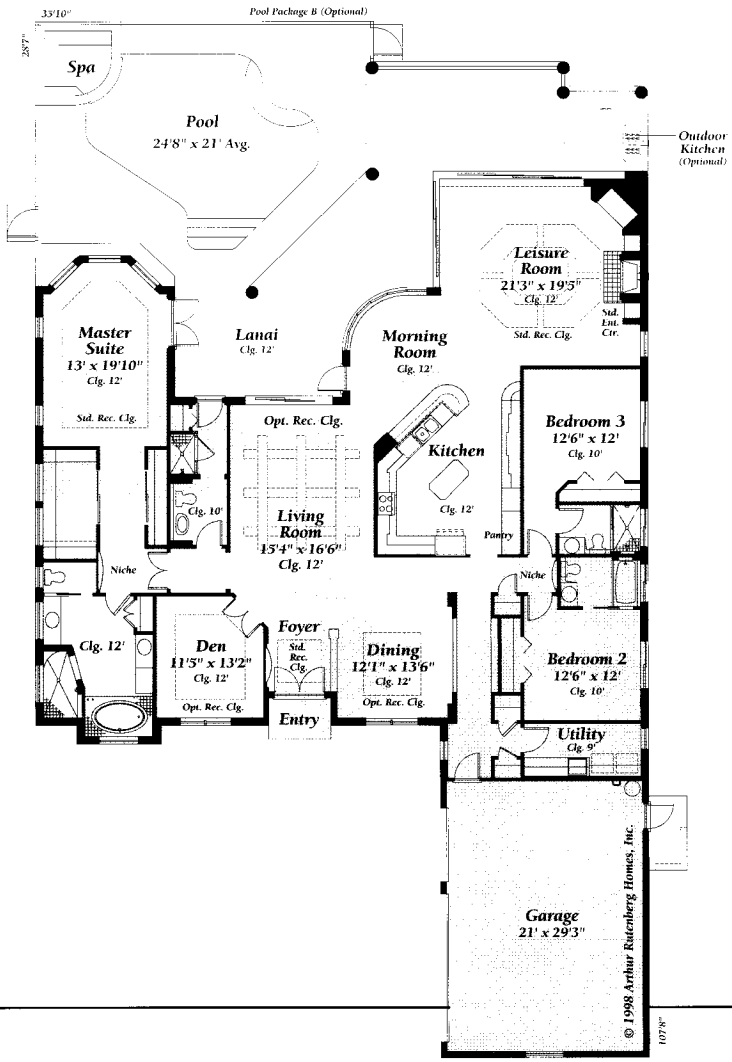


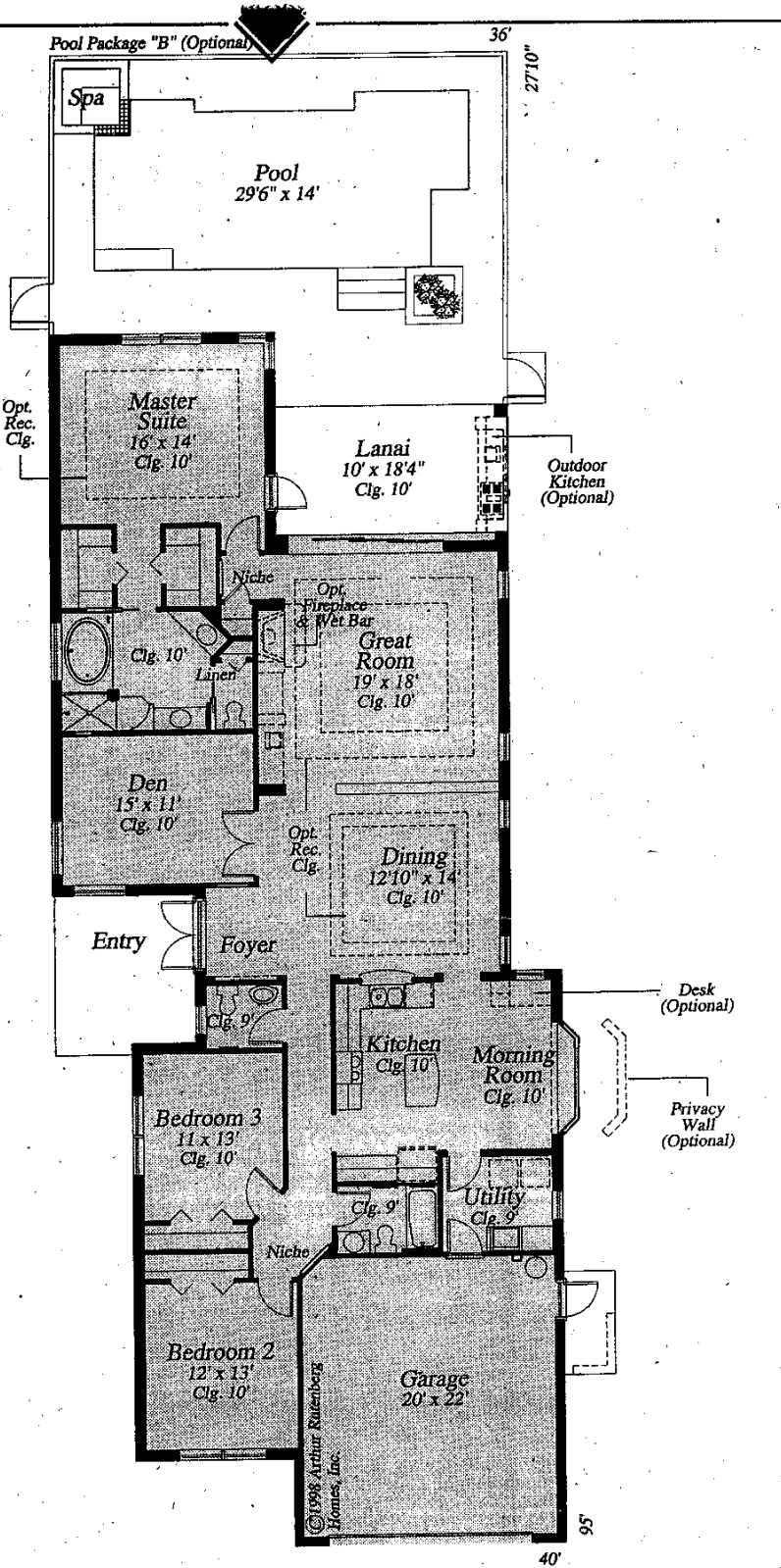
Sea Pines

2,121 square feet
Plan # 314-03

Living	2,121 S.F.
Lanai	110 S.F.
Garage	459 S.F.
Entry	85 S.F.
Total	3,025 S.F.

are hallmarks of the exceptional design of Arthur Rutenberg Homes.





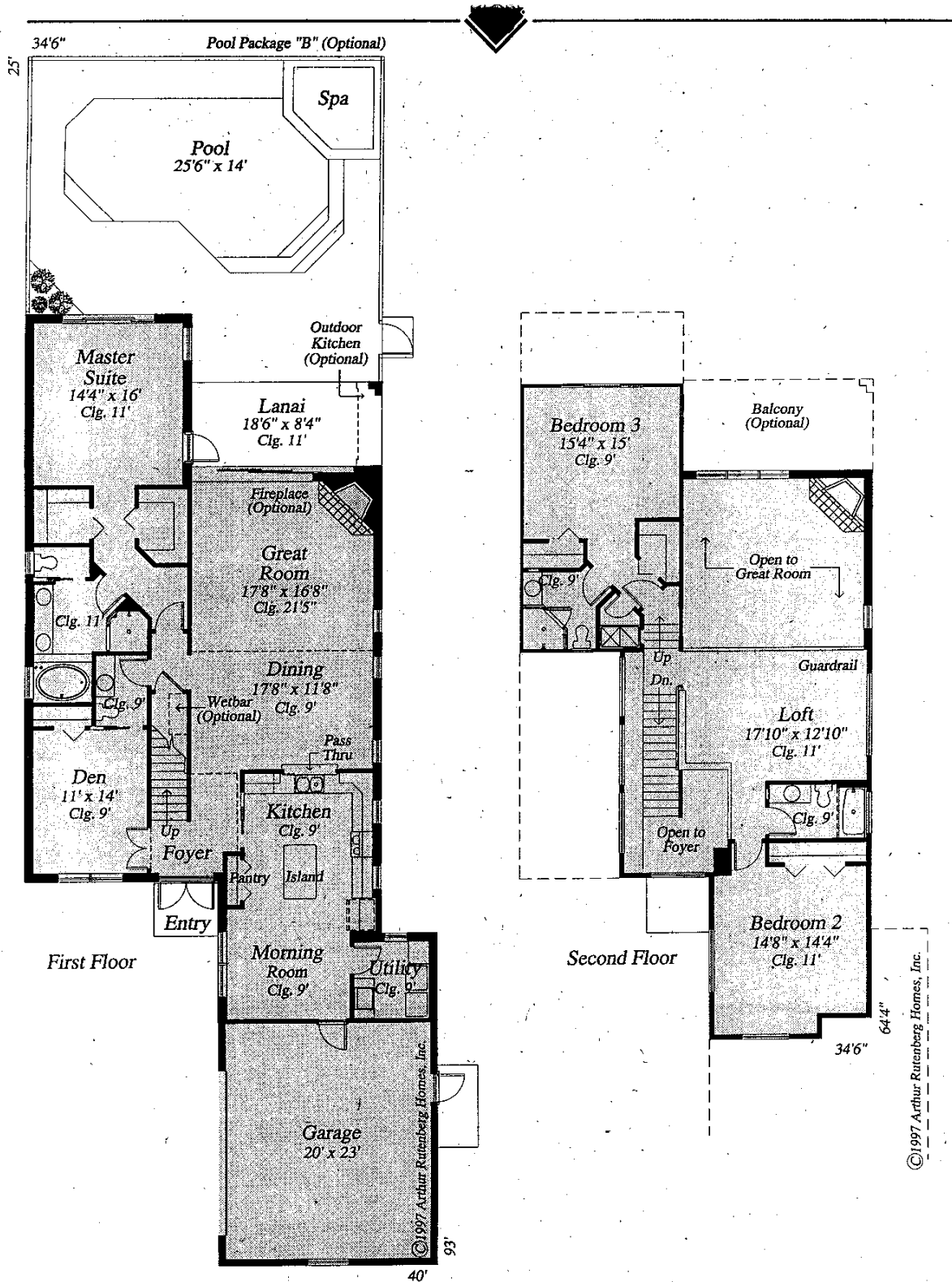
Summerlin

Plan # 451-02
Revised 07/16/99

Plans are subject to change without notice. Certain items such as the pool or fireplace shown may be optional.

Living	2,374 s.f.
Lanai	196 s.f.
Garage	472 s.f.
Entry	130 s.f.
Total	3,172 s.f.

Illustrations are artist renderings only. This is a concept drawing. For a more accurate floor plan, reference should be made to the Design Manual.



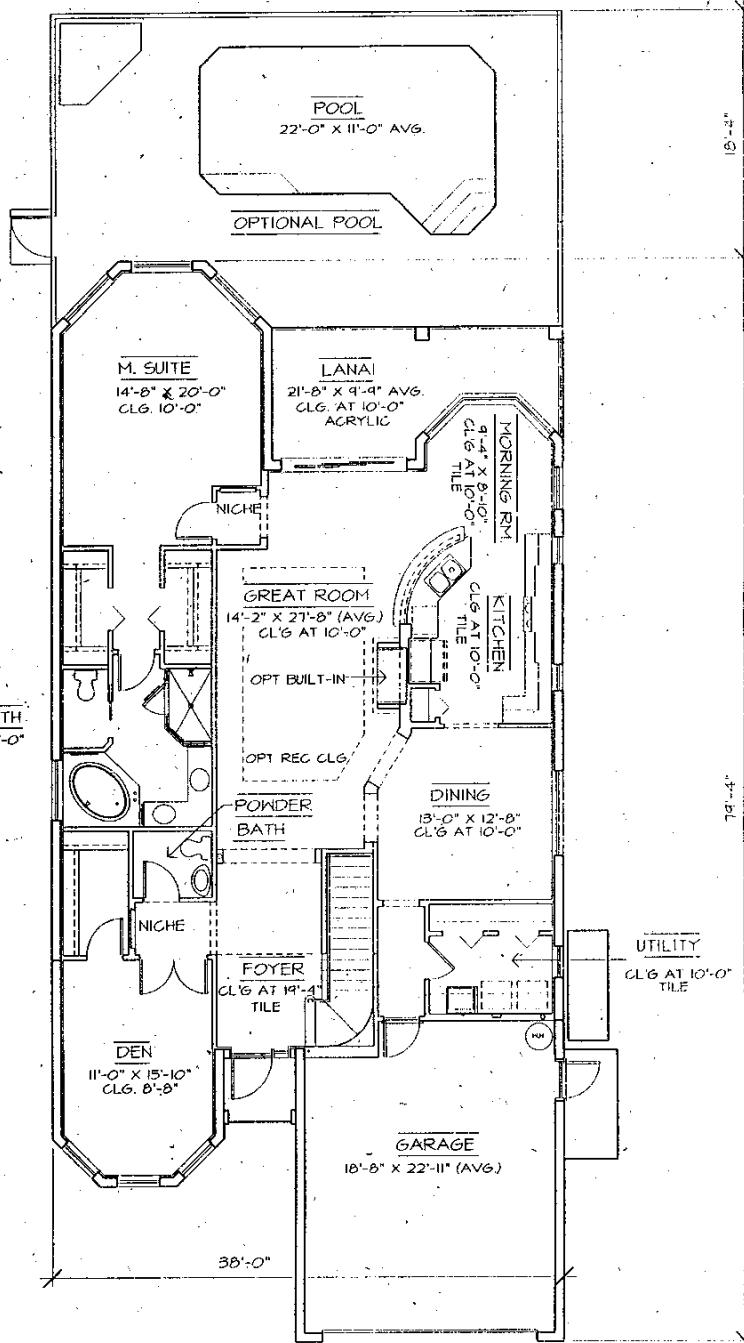
©1997 Arthur Rutenberg Homes, Inc.

Aberdeen III

Plan # 360-02
Revised 9/18/98

Plans are subject to change without notice. Certain items such as the pool or fireplace shown may be optional. Arthur Rutenberg Homes reserves the right to make modifications to floor plans, materials and specifications without notice. Dimensions are approximate. Illustrations are artist renderings only. This is a concept drawing. For a more accurate floor plan, reference should be made to the Design Manual.

Living (1st Flr.)	1,895 s.f.
Living (2nd Flr.)	1,054 s.f.
Lanai	165 s.f.
Garage	505 s.f.
Entry	33 s.f.
Total	3,652 s.f.



©1998 ARTHUR RUTENBERG HOMES, INC.

The Cottage

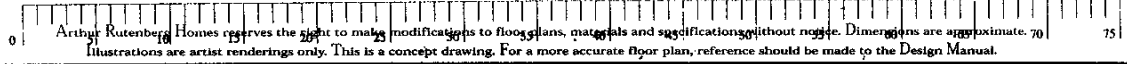
Plan #: 500-2f-01
 Franchise: Keystone Custom Homes, Inc.
 © 1999 Arthur Rutenberg Homes, Inc.
 File #: Inventory
 Drawn By: AAD
 December 22, 1999

Living 1st floor	1991 S.F.
Sid Living 2nd floor	830 S.F.
Living deck	118 S.F.
Lanai	170 S.F.
Garage	455 S.F.
Entry	26 S.F.
Total area	3590 S.F.

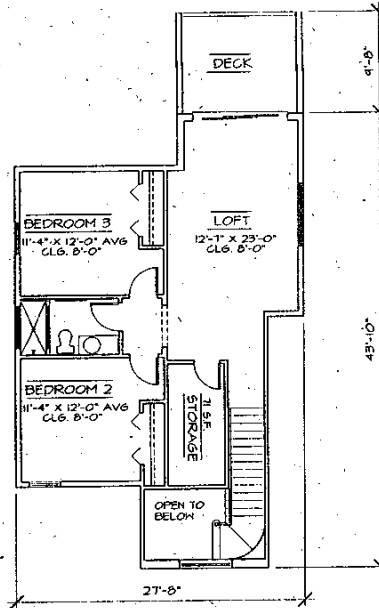
Note: Plan information is conceptual only. Certain items may be changed at production stage of plans.



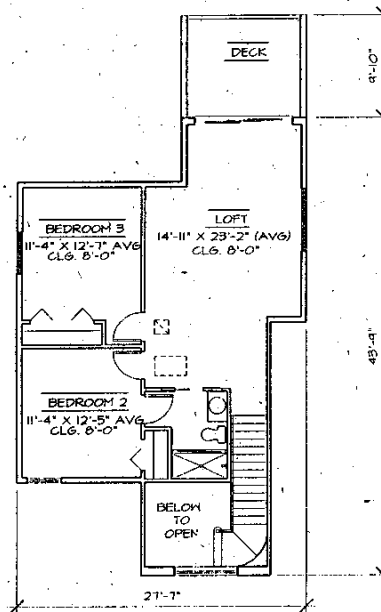
MEASUREMENT IN FEET



Arthur Rutenberg Homes reserves the right to make modifications to floor plans, materials and specifications without notice. Dimensions are approximate. 70 75
 Illustrations are artist renderings only. This is a concept drawing. For a more accurate floor plan, reference should be made to the Design Manual.



*Std Second Floor
total sq ft 830*



*Optional Second Floor
total sq ft 787*

The Cottage

Plan #: 500-2f-01
Franchise: Keystone Custom Homes, Inc.
© 1999 Arthur Rutenberg Homes, Inc.
File #: Inventory

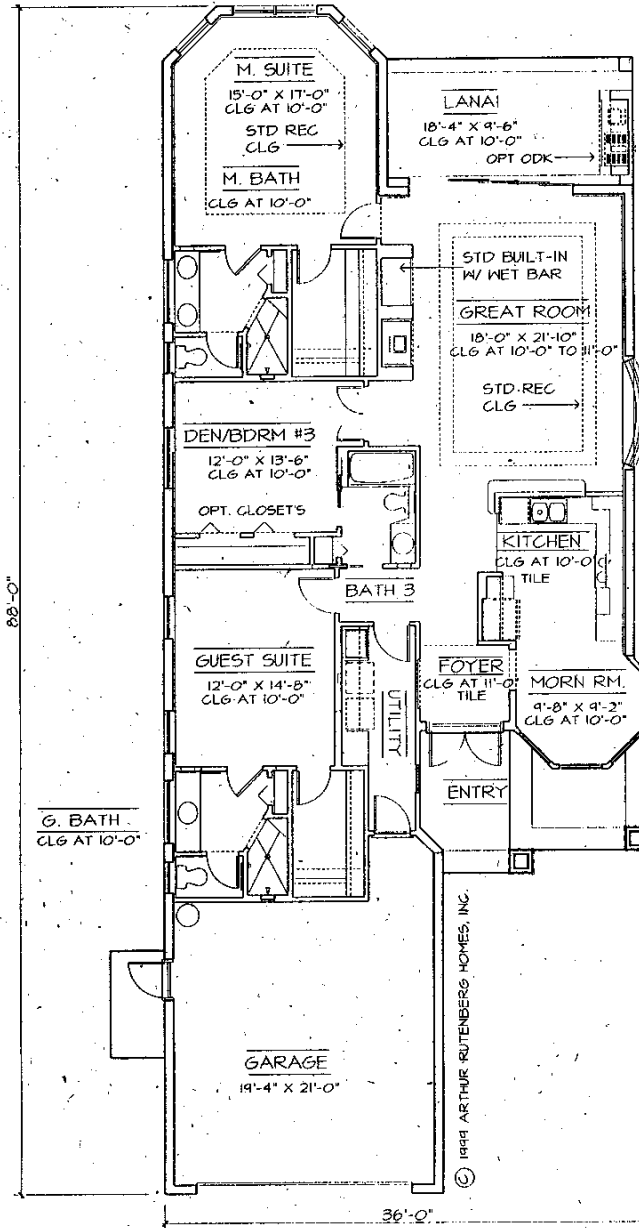
Arthur Rutenberg Homes reserves the right to make modifications to floor plans, materials and specifications without notice. Dimensions are approximate.
December 22, 1999

Note: Plan information is conceptual only. Certain items may be changed at production stage of plans.



Arthur Rutenberg
Homes

For a more accurate floor plan, reference should be made to the Design Manual.



The Islamorada

Plan #: 520-2F-Lh
 Franchise: 45-Keystone Custom Homes Inc.
 © 1999 Arthur Rutenberg Homes, Inc.
 File #: Model
 Drawn By: AAD
 October 22, 1999

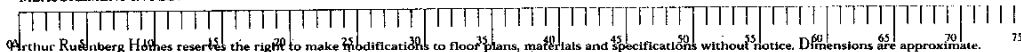
Living	1868 S.F.
Lanai	174 S.F.
Garage	474 S.F.
Entry	140 S.F.
Total area	2656 S.F.

Note: Plan information is conceptual only. Certain items may be changed at production stage of plans.

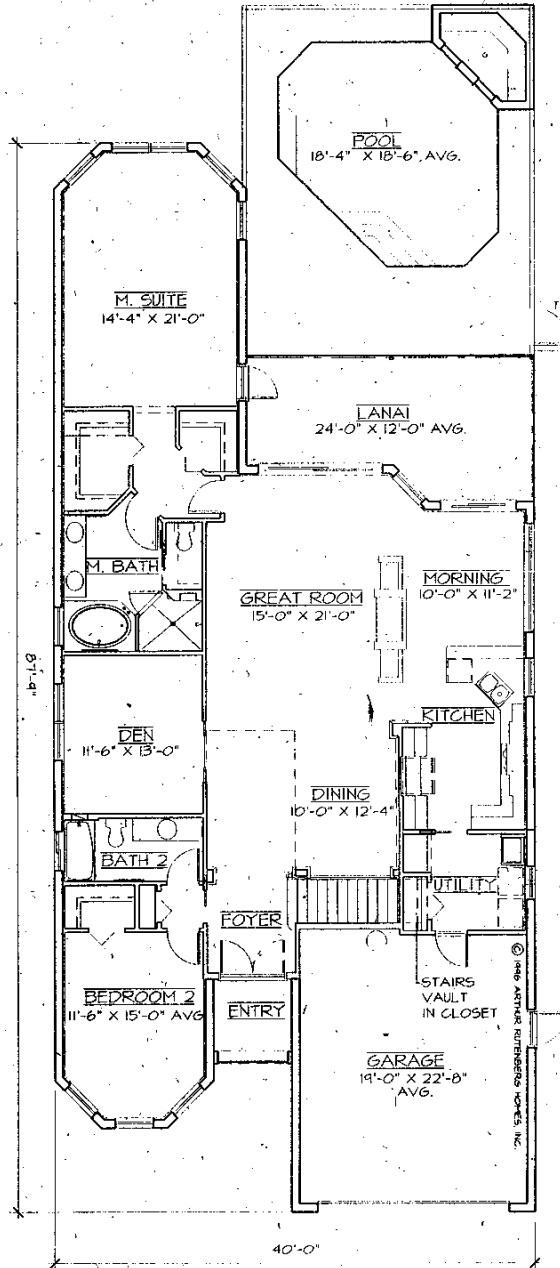


Arthur Rutenberg
Homes

MEASUREMENT IN FEET



Arthur Rutenberg Homes reserves the right to make modifications to floor plans, materials and specifications without notice. Dimensions are approximate. Illustrations are artist renderings only. This is a concept drawing. For a more accurate floor plan, reference should be made to the Design Manual.



The Whitney

The Custom - 2 Story
 Plan #: 540-2f-01
 Franchise: Keystone Custom Homes, Inc.
 © 1996 Arthur Rutenberg Homes, Inc.
 File #: Inventory
 Drawn By: AAD
 June 15, 1999

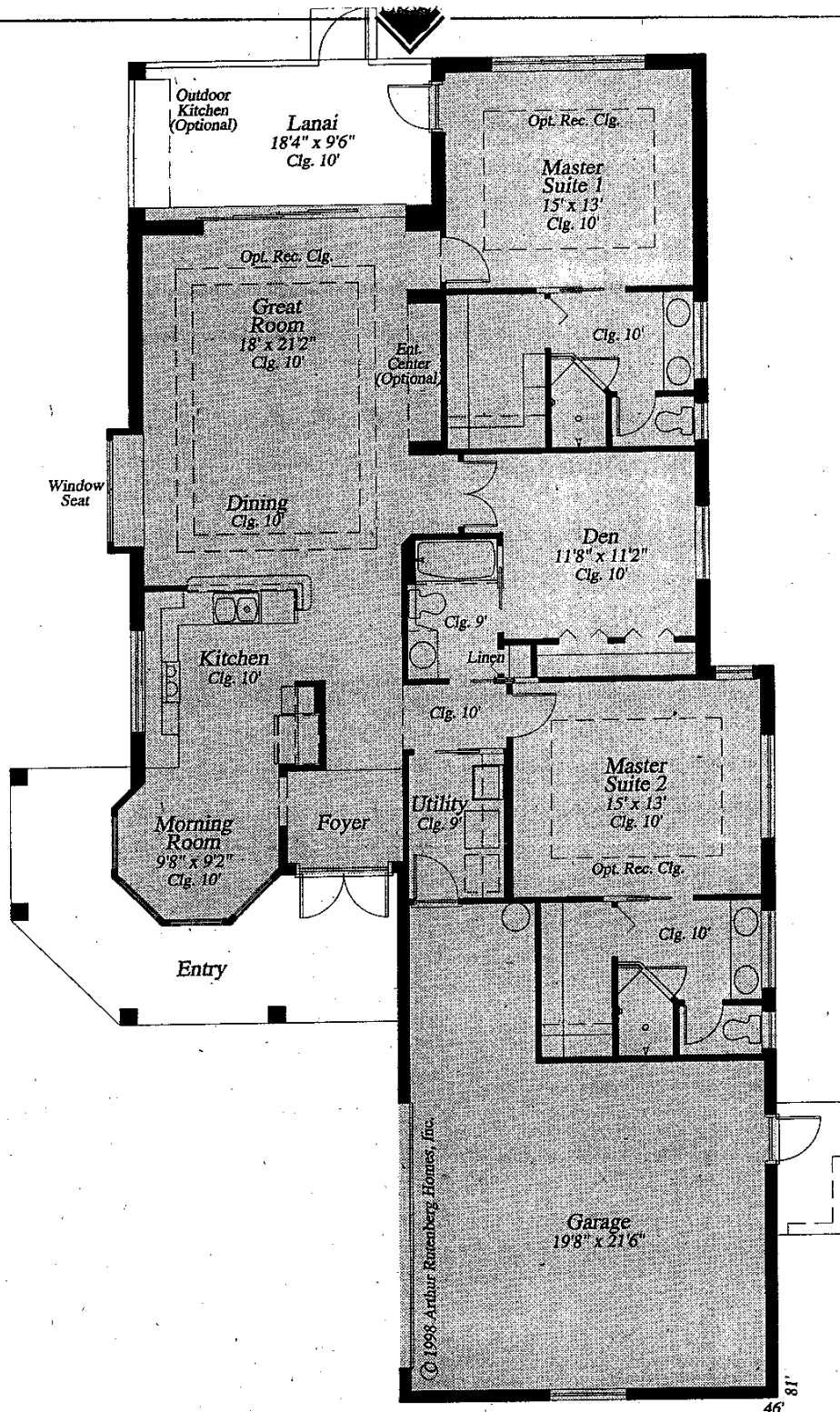
Living 1st floor	2135 S.F.
Living 2nd floor	477 S.F.
Living total	2612 S.F.
Lanai	247 S.F.
Garage	461 S.F.
Entry	43 S.F.
Total area	3363 S.F.

Note: Plan information is conceptual only. Certain items may be changed at production stage of plans.



Arthur Rutenberg
Homes

Arthur Rutenberg Homes reserves the right to make modifications to floor plans, materials and specifications without notice. Dimensions are approximate. Illustrations are for informational purposes only. This is a concept drawing. For a more accurate floor plan, reference should be made to the Design Manual.



Turnberry

Plan # 482-01
Revised 10/15/99

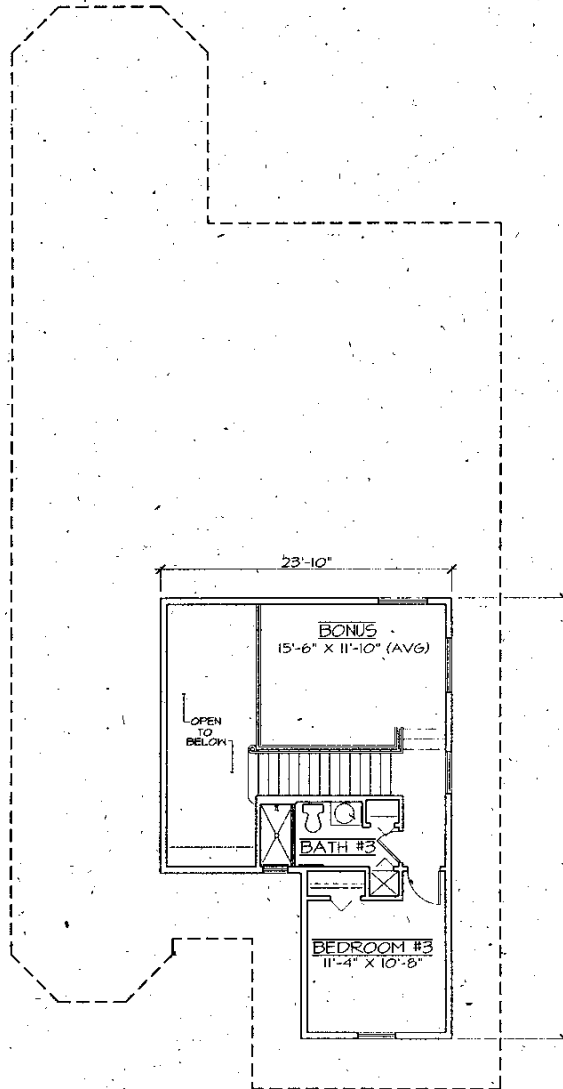
Plans are subject to change without notice. Certain items such as the pool or fireplace shown may be optional.

Arthur Rutenberg Homes reserves the right to make modifications to floor plans, materials and specifications without notice. Dimensions are approximate.

Illustrations are artist renderings only. This is a concept drawing. For a more accurate floor plan, reference should be made to the Design Manual.

Living	1,800 s.f.
Lanai	174 s.f.
Garage	534 s.f.
Entry	208 s.f.
Total	2,716 s.f.

46
81



The Whitney

The Custom - 2 Story

Plan #: 00-00-00

Franchise: Keystone Custom Homes, Inc.

© 1996 Arthur Rutenberg Homes, Inc.

File #: Inventory

Drawn By: AAD

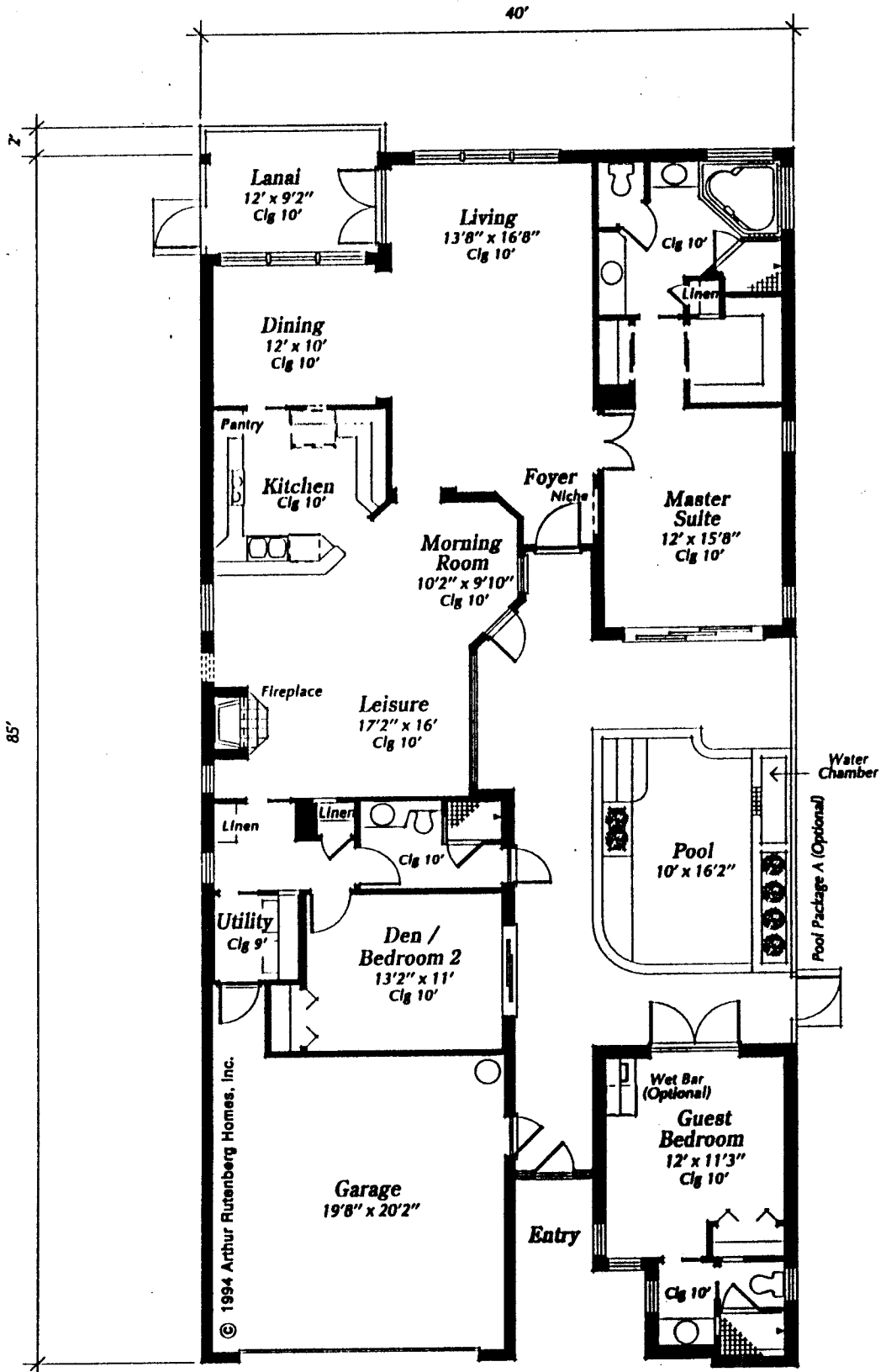
June 15, 1999

Note: Plan information is conceptual only. Certain items may be changed at production stage of plans.



Arthur Rutenberg
Homes

Arthur Rutenberg Homes reserves the right to make modifications to floor plans, materials and specifications without notice. Dimensions are approximate. Illustrations are not to scale. This is a conceptual drawing. Not a final or accurate floor plan. Reference should be made to the Design Manual.



© 1994 Arthur Rutenberg Homes, Inc.

Sea Pines
2,121 square feet