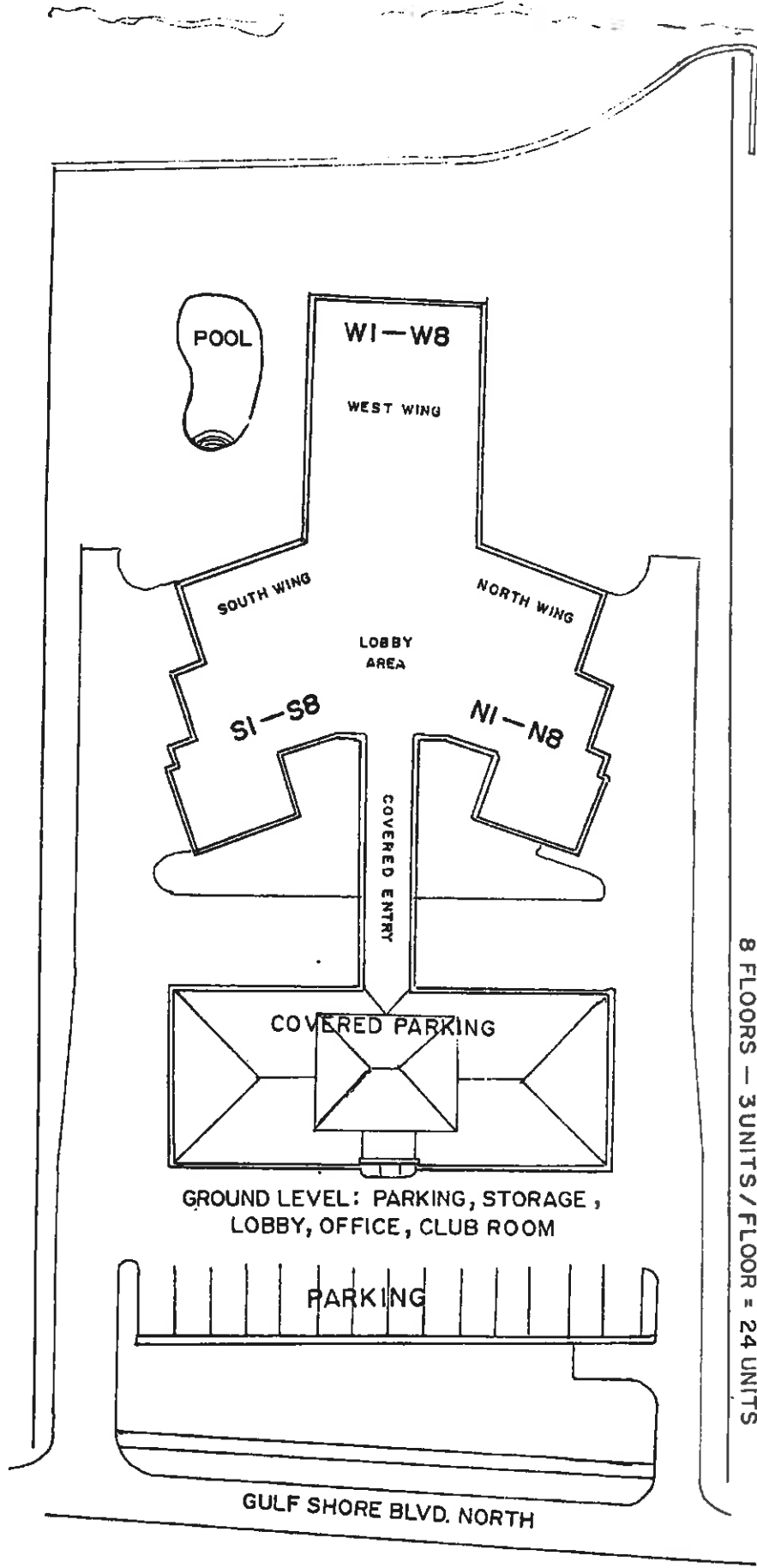


GULF OF MEXICO



**GRAMERCY**

2777 GULF SHORE BLVD. NORTH

ZONE 6

8 FLOORS - 3 UNITS / FLOOR = 24 UNITS

GULF SHORE BLVD. NORTH

POOL

WI-W8

WEST WING

SOUTH WING

NORTH WING

LOBBY AREA

SI-S8

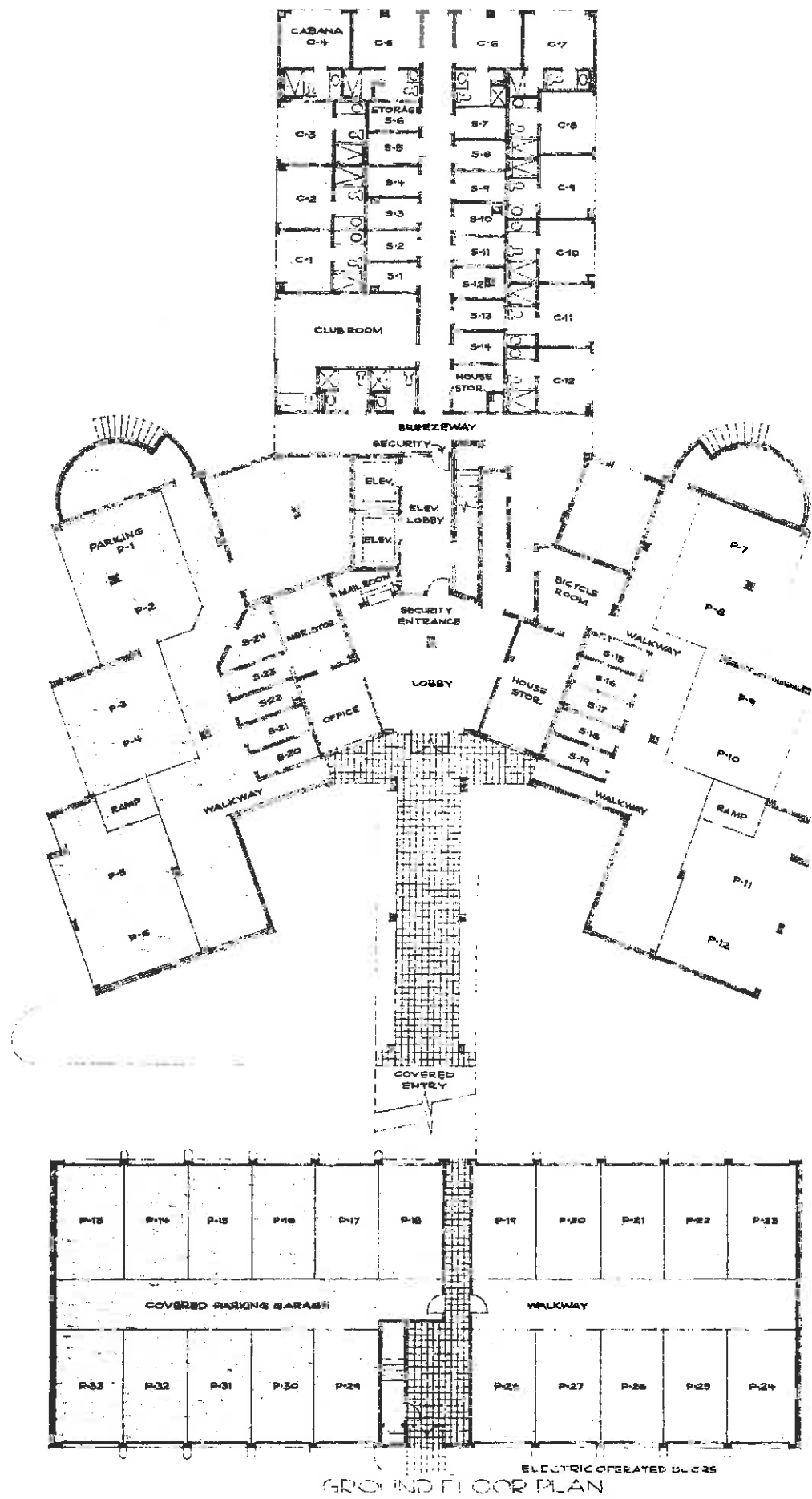
NI-N8

COVERED ENTRY

COVERED PARKING

GROUND LEVEL: PARKING, STORAGE, LOBBY, OFFICE, CLUB ROOM

PARKING



GROUND FLOOR PLAN

FLOOR PLAN