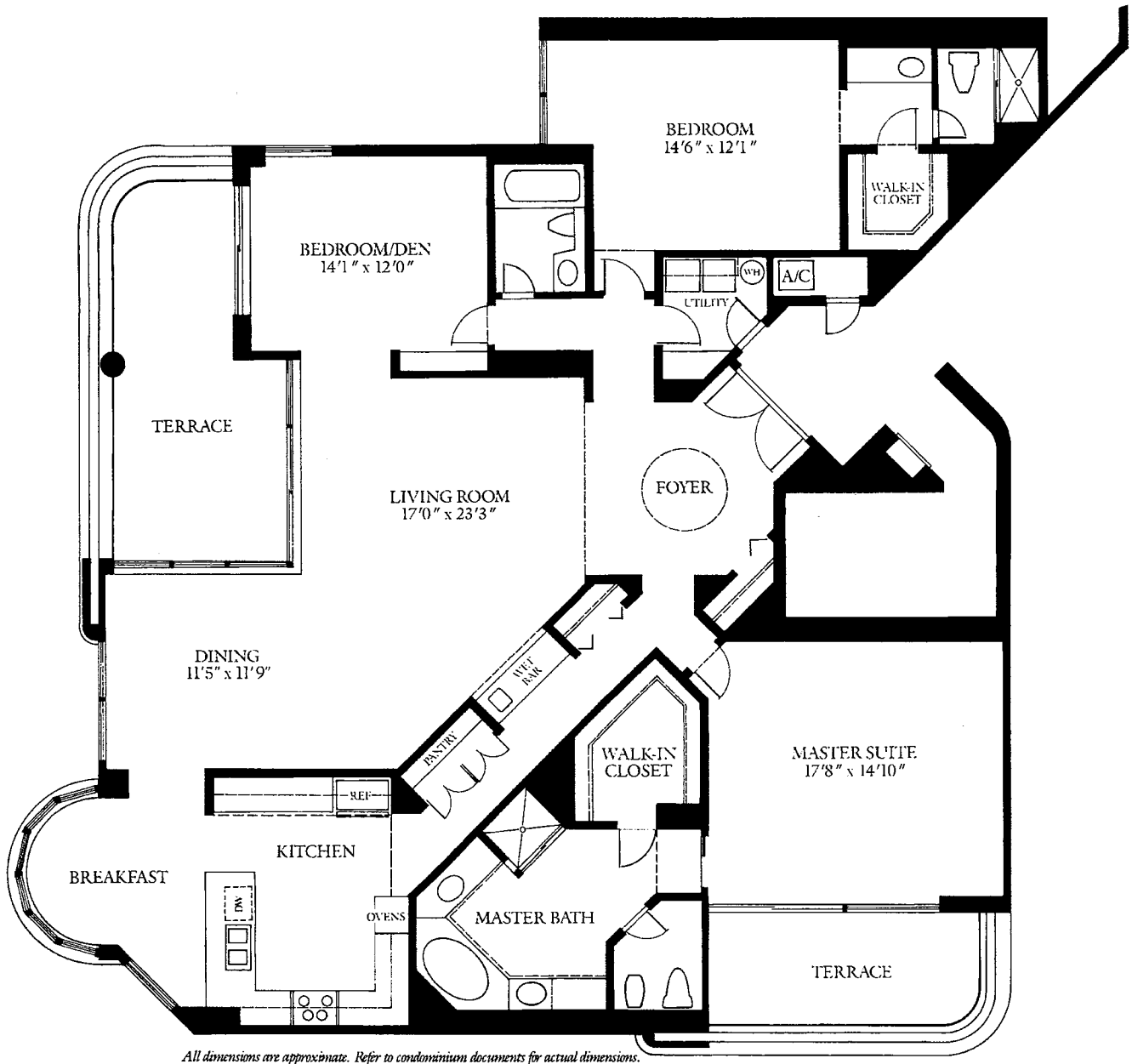


UNIT A
WEST TOWER
RESIDENCE TYPE "A"
 FLOOR PLAN (2298 SQ. FT.)

ORAL REPRESENTATIONS CANNOT BE RELIED UPON AS CORRECTLY STATING REPRESENTATIONS OF THE DEVELOPER. FOR CORRECT REPRESENTATIONS, REFERENCES SHOULD BE MADE TO THIS BROCHURE AND TO THE DOCUMENTS REQUIRED BY SECTION 718.503, FLORIDA STATUTES, TO BE FURNISHED BY A DEVELOPER TO A BUYER OR LESSEE.

A STATEMENT OF RECORD FILED WITH THE NEW JERSEY REAL ESTATE COMMISSION PERMITS THIS PROPERTY TO BE OFFERED TO NEW JERSEY RESIDENTS BUT DOES NOT PASS UPON ITS MERITS OR VALUE. OBTAIN THE NEW JERSEY PUBLIC OFFERING STATEMENT AND READ IT BEFORE SIGNING ANYTHING. NJA#F0386009FL.

9/15/86



All dimensions are approximate. Refer to condominium documents for actual dimensions.

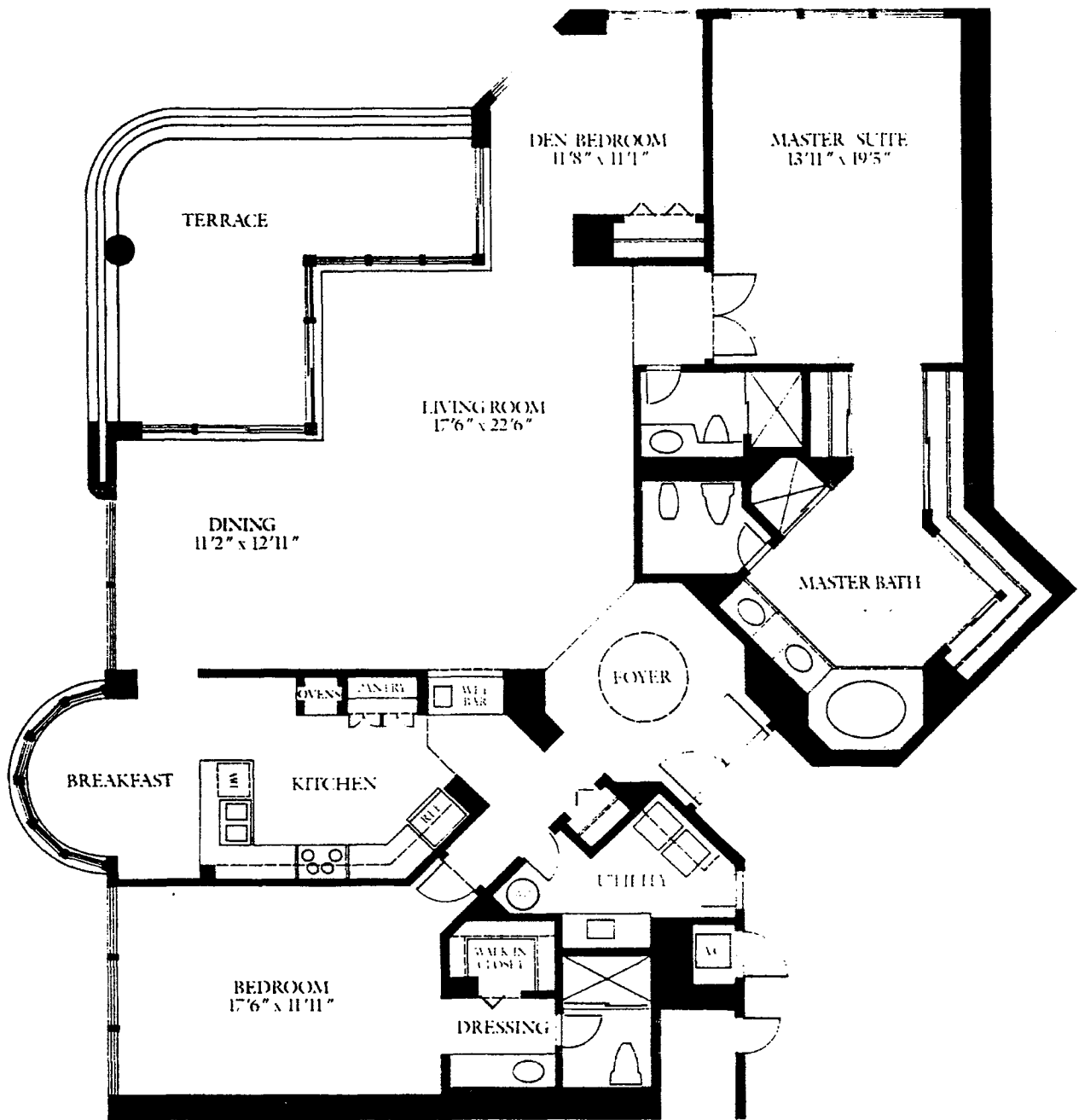
UNIT B
WEST TOWER

RESIDENCE TYPE "B"
 FLOOR PLAN (2815 SQ. FT.)

ORAL REPRESENTATIONS CANNOT BE RELIED UPON AS CORRECTLY STATING REPRESENTATIONS OF THE DEVELOPER. FOR CORRECT REPRESENTATIONS, REFERENCES SHOULD BE MADE TO THIS BROCHURE AND TO THE DOCUMENTS REQUIRED BY SECTION 718.503, FLORIDA STATUTES, TO BE FURNISHED BY A DEVELOPER TO A BUYER OR LESSEE.

A STATEMENT OF RECORD FILED WITH THE NEW JERSEY REAL ESTATE COMMISSION PERMITS THIS PROPERTY TO BE OFFERED TO NEW JERSEY RESIDENTS BUT DOES NOT PASS UPON ITS MERITS OR VALUE. OBTAIN THE NEW JERSEY PUBLIC OFFERING STATEMENT AND READ IT BEFORE SIGNING ANYTHING. NJA#F0386009FL.

9/15/86

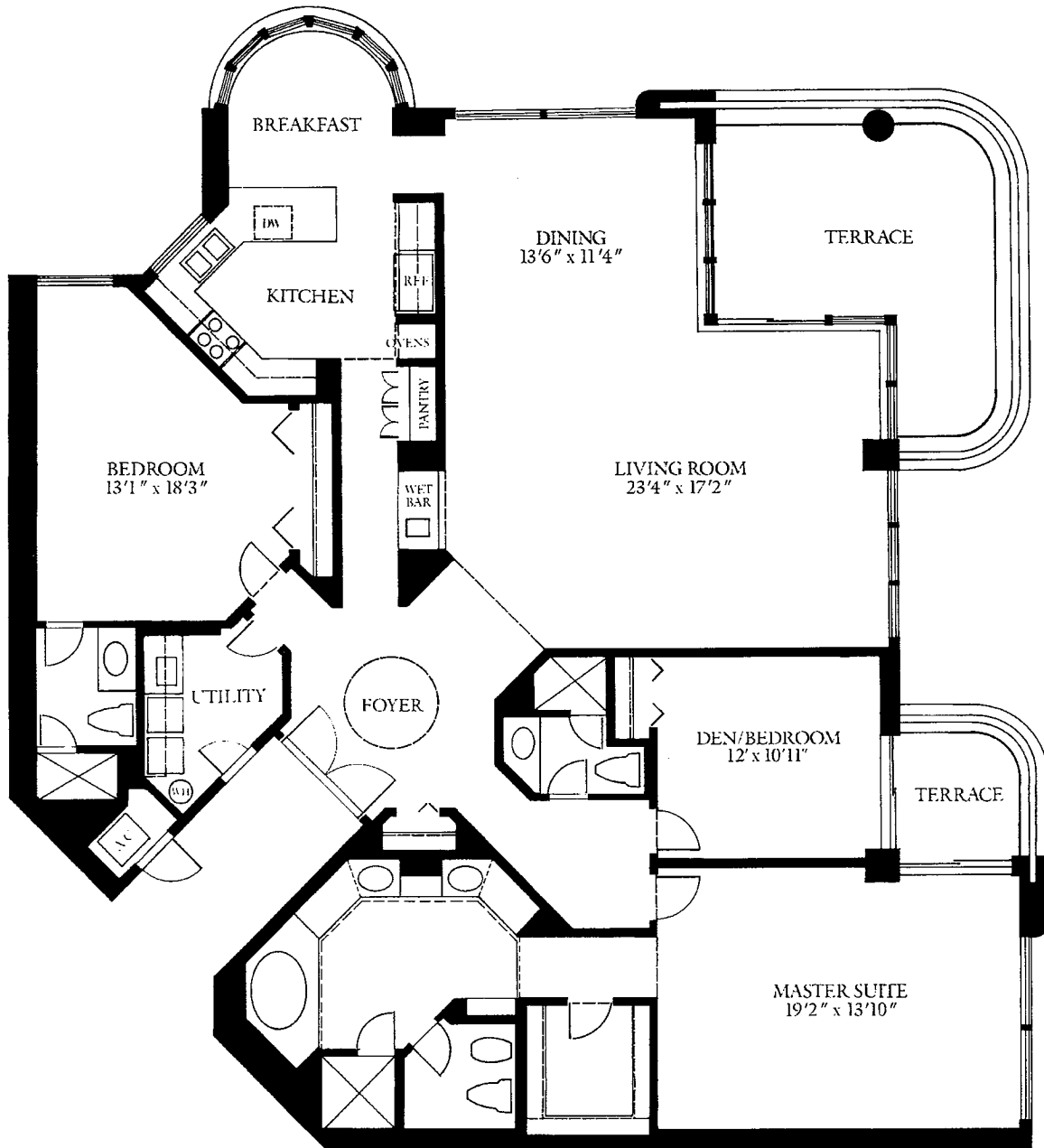


All dimensions are approximate. Refer to condominium documents for actual dimensions.

UNIT C
WEST TOWER
RESIDENCE TYPE "C"
 FLOOR PLAN (2607 SQ. FT.)

ORAL REPRESENTATIONS CANNOT BE RELIED UPON AS CORRECTLY STATING REPRESENTATIONS OF THE DEVELOPER. FOR CORRECT REPRESENTATIONS, REFERENCES SHOULD BE MADE TO THIS BROCHURE AND TO THE DOCUMENTS REQUIRED BY SECTION 718.503, FLORIDA STATUTES, TO BE FURNISHED BY A DEVELOPER TO A BUYER OR LESSEE.

A STATEMENT OF RECORD FILED WITH THE NEW JERSEY REAL ESTATE COMMISSION PERMITS THIS PROPERTY TO BE OFFERED TO NEW JERSEY RESIDENTS BUT DOES NOT PASS UPON ITS MERITS OR VALUE. OBTAIN THE NEW JERSEY PUBLIC OFFERING STATEMENT AND READ IT BEFORE SIGNING ANYTHING. NJA#F0386009FL.



All dimensions are approximate. Refer to condominium documents for actual dimensions.

**UNIT D
WEST TOWER**

RESIDENCE TYPE "D"

FLOOR PLAN (2562 SQ. FT.)

ORAL REPRESENTATIONS CANNOT BE RELIED UPON AS CORRECTLY STATING REPRESENTATIONS OF THE DEVELOPER. FOR CORRECT REPRESENTATIONS, REFERENCES SHOULD BE MADE TO THIS BROCHURE AND TO THE DOCUMENTS REQUIRED BY SECTION 718.503, FLORIDA STATUTES, TO BE FURNISHED BY A DEVELOPER TO A BUYER OR LESSEE.

A STATEMENT OF RECORD FILED WITH THE NEW JERSEY REAL ESTATE COMMISSION PERMITS THIS PROPERTY TO BE OFFERED TO NEW JERSEY RESIDENTS BUT DOES NOT PASS UPON ITS MERITS OR VALUE. OBTAIN THE NEW JERSEY PUBLIC OFFERING STATEMENT AND READ IT BEFORE SIGNING ANYTHING. NJA#F0386009FL.

9/15/86