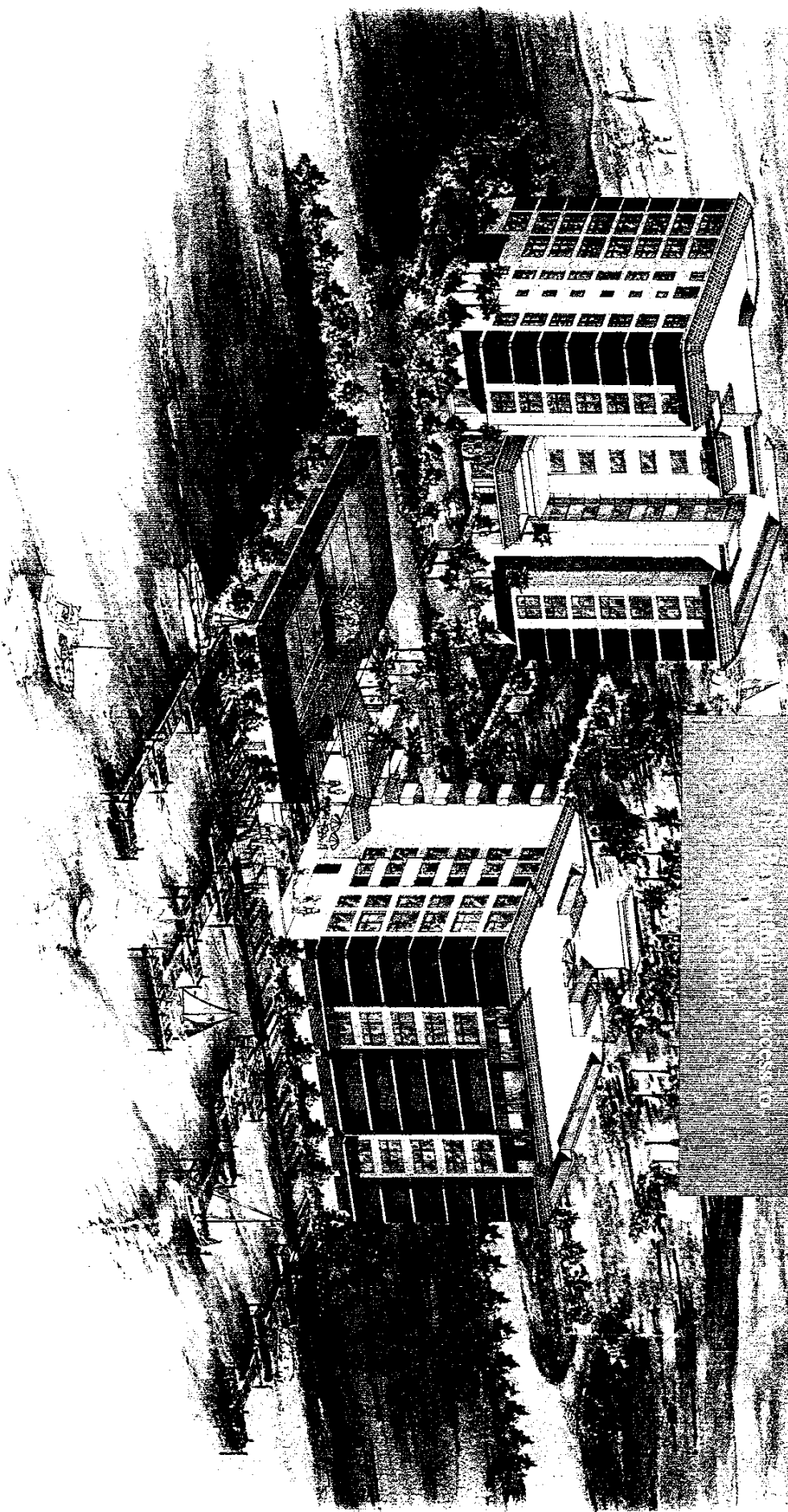


Les
Dauphin

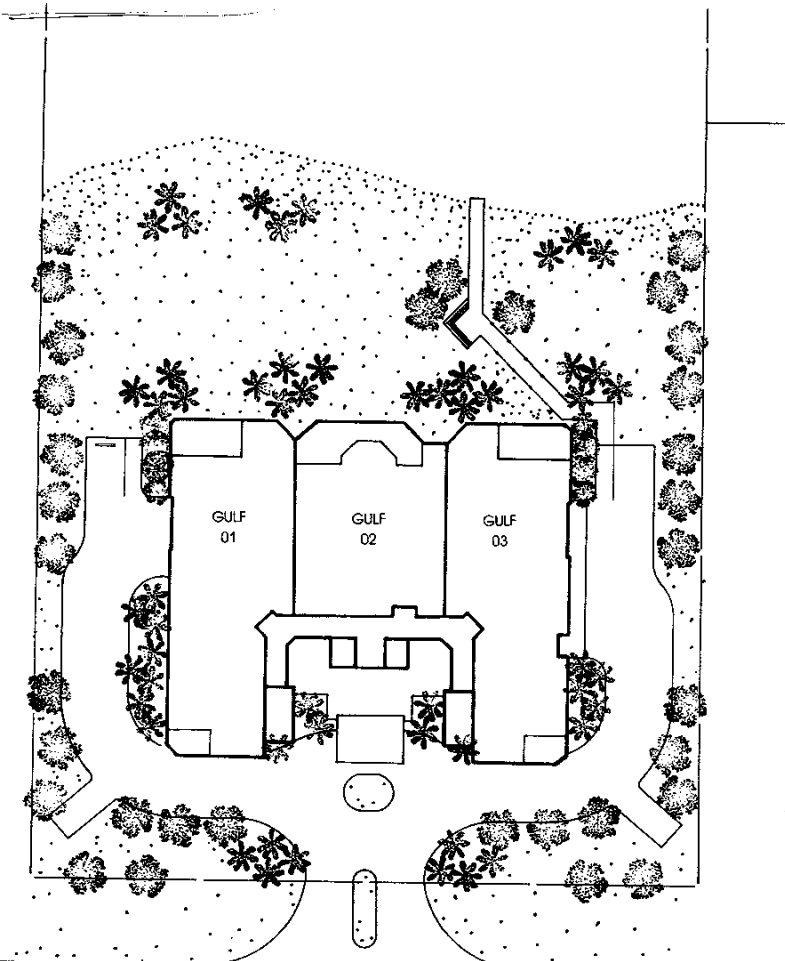




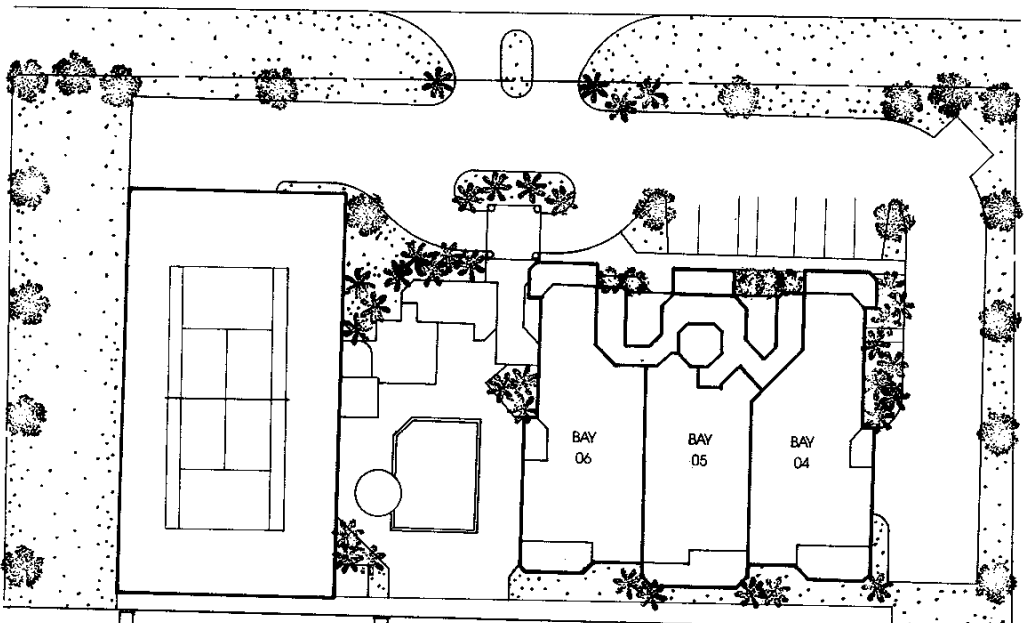
Orbita del Caribe, S.A. de C.V.
Calle 100 No. 100, P.O. Box 100, San Juan, P.R. 00911
Tel. (787) 754-1000

Orbita del Caribe, S.A. de C.V.
Calle 100 No. 100, P.O. Box 100, San Juan, P.R. 00911
Tel. (787) 754-1000

Orbita del Caribe, S.A. de C.V.
Calle 100 No. 100, P.O. Box 100, San Juan, P.R. 00911
Tel. (787) 754-1000



GULF SHORE DRIVE



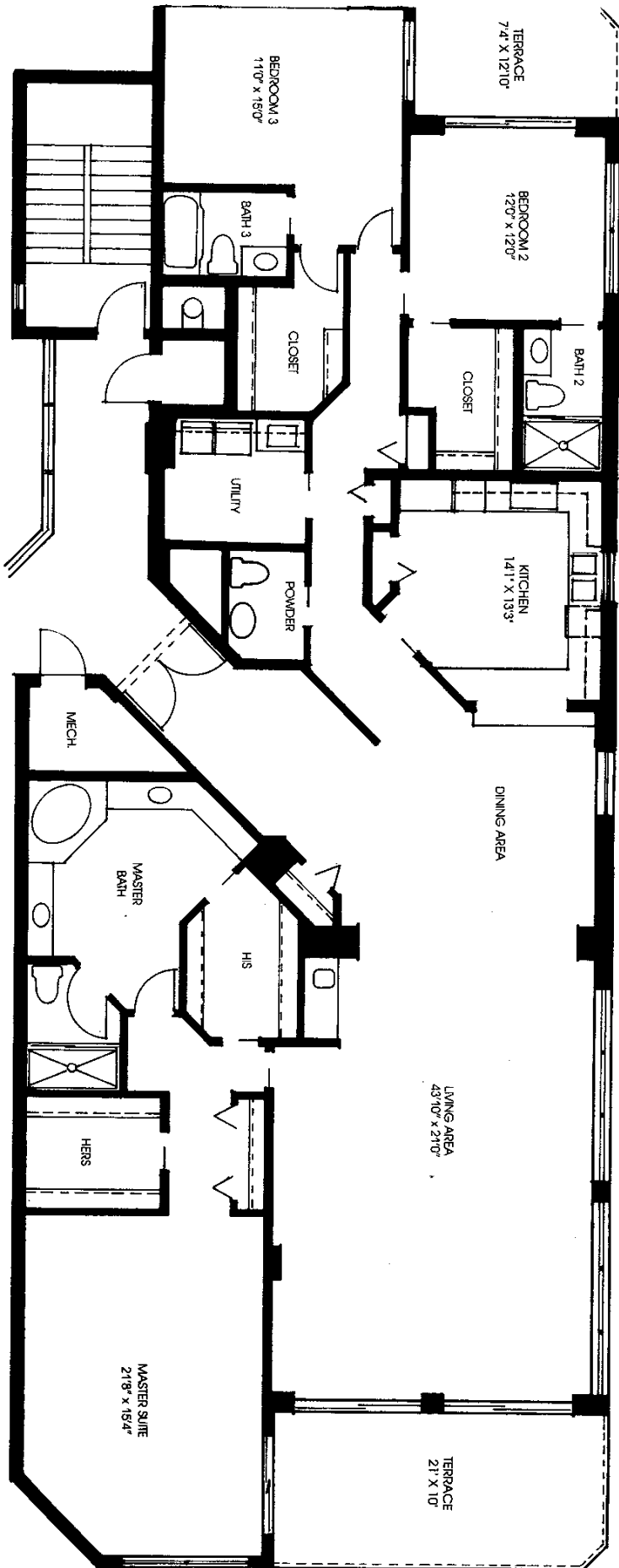
BOAT DOCKS

BAY AND DIRECT ACCESS TO GULF

All dimensions are approximate and subject to change without notice

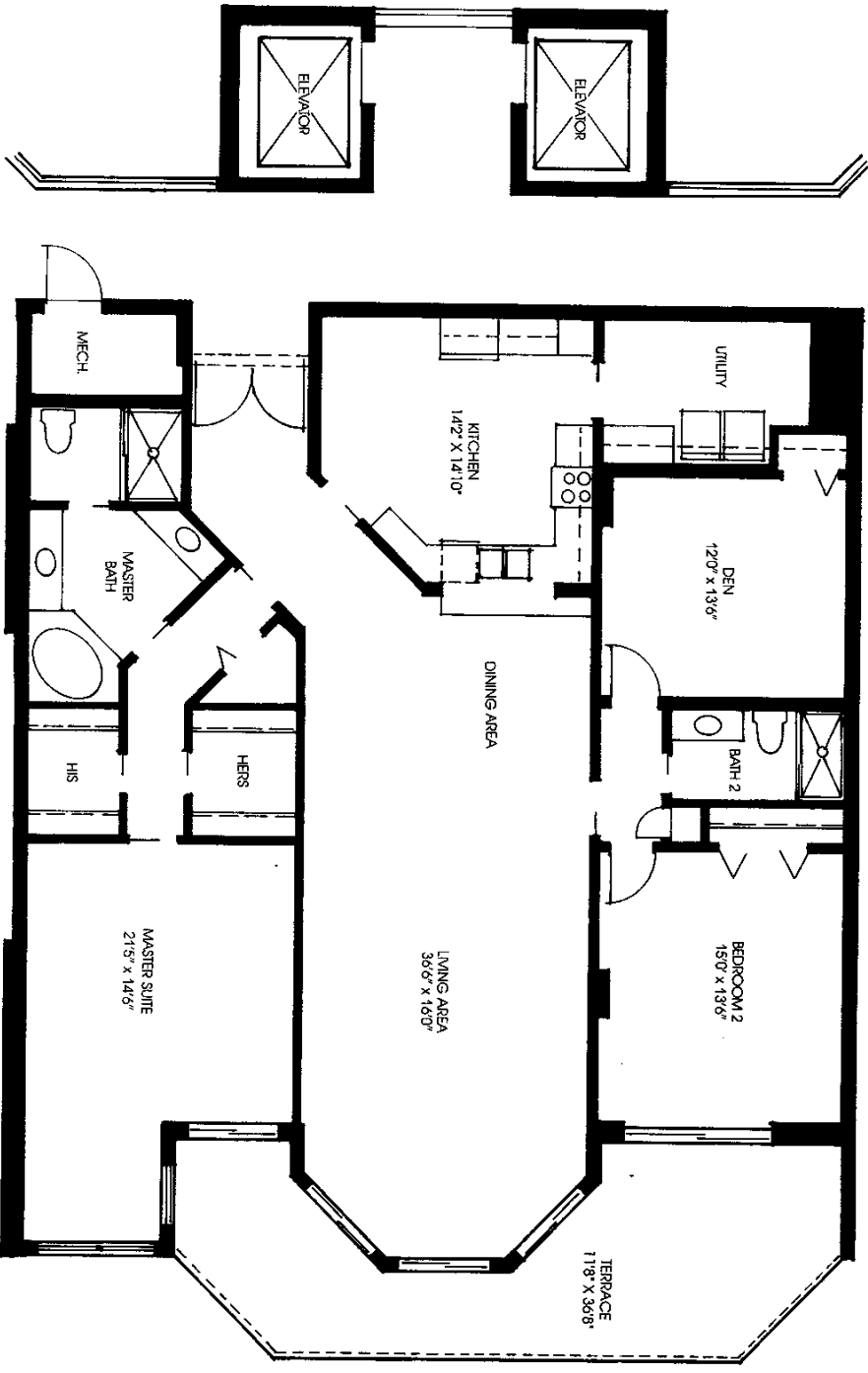


GULE 01
2991 SQ. FT. LIVING AREA
304 SQ. FT. BALCONY
3295 SQ. FT. TOTAL

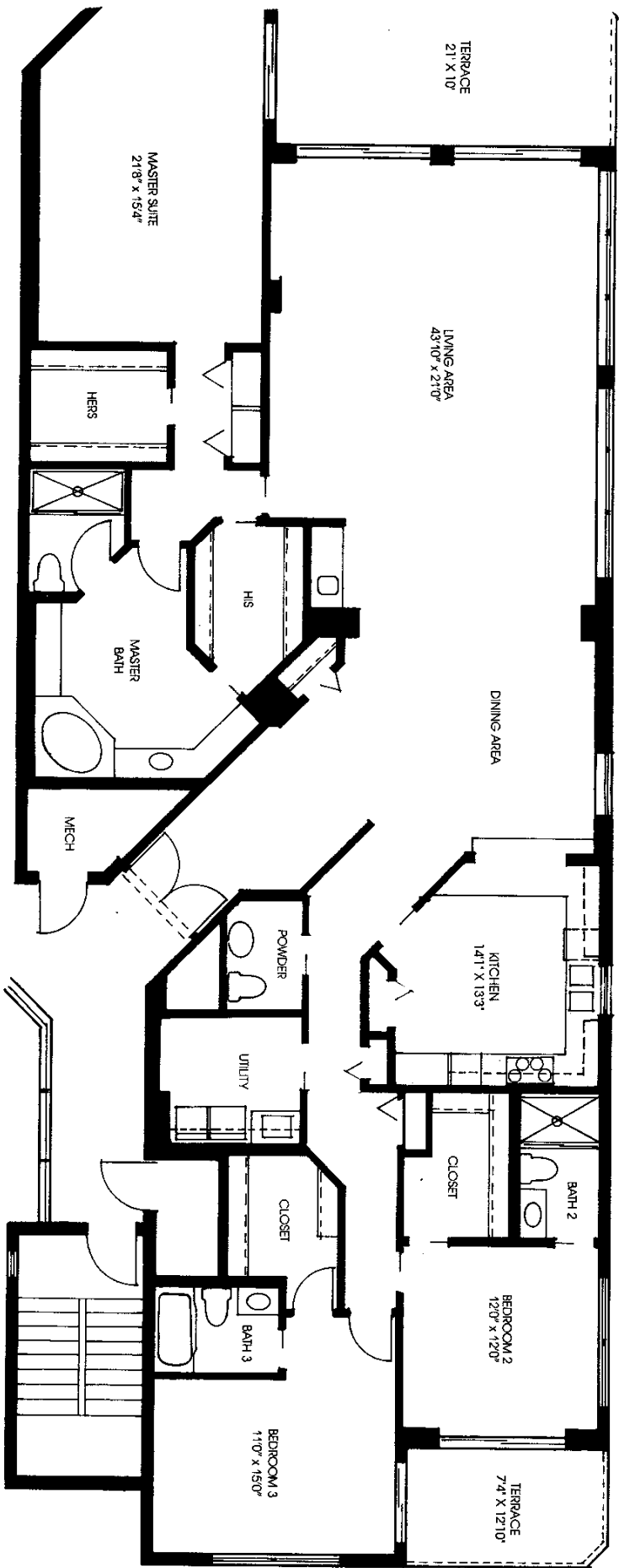


All dimensions are approximate and subject to change without notice.

GULF 02
2174 SQ. FT. LIVING AREA
305 SQ. FT. BALCONY
2479 SQ. FT. TOTAL



All dimensions are approximate and subject to change without notice.



GILF-03
 2991 SQ. FT. LIVING AREA
 304 SQ. FT. BALCONY
 3295 SQ. FT. TOTAL

All dimensions are approximate and subject to change without notice.